



ACEC

2022-2023 Directory of ACEC/NC Member Firms

ACEC/NC MISSION STATEMENT

ACEC/NC is the premier organization in North Carolina that represents the business interests of the engineering industry in our state. ACEC/NC's mission is to promote the business interests of engineering companies by providing legislative advocacy and business services.

American Council of Engineering Companies of North Carolina
150 Fayetteville Street, Suite 1340
Raleigh, NC 27601
(919) 781-7934
info@acecnc.org



Contact Information

**Wells Fargo Capital Center
150 Fayetteville Street
Suite 1340
Raleigh, NC 27601**

Tel: (919) 781-7934

Fax: (919) 781-7319

**www.acecnc.org
info@acecnc.org**

James Smith, P.E.
Executive Director
jsmith@acecnc.org

Fred Burchett, P.E.
Director of Member Recruitment & Retention
fburchett@acecnc.org

Jessica Hartong, CMP
Director of Events & Conferences
jhartong@acecnc.org

Meredith Houston, PHR, IOM, CAE
Director of Operations
mhouston@acecnc.org

Tammy Bromley
Office Manager
tbromley@acecnc.org

2022 - 2023 Board of Directors



Mike Slusher, P.E.
President

Davis-Martin-Powell & Associates, Inc.



Elizabeth Phipps, P.E.
President-Elect

KCI Associates



Stephen Greene P.E.
Vice President

Ramey Kemp Associates



Iona Thomas, AICP
Secretary/Treasurer

McAdams Company



Paul Meehan, P.E.

National Director
HDR



Matthew Fogleman, P.E.

Director
ECS Southeast



Michael L. Holder, P.E.

Director
Gannett Fleming



Kraig Kern, CPSM

Director
W.K. Dickson & Co., Inc.



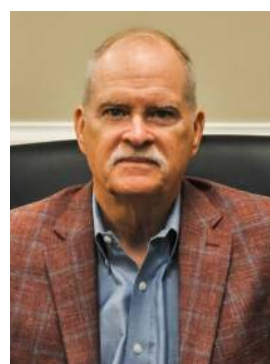
**Radha Krishna
Swayampakala, P.E., PTOE**

Director
RS&H Architects-Engineers-
Planners, Inc.



Patrick Waterman, P.E.

Director
LaBella Associates



Eddie Wetherill, P.E.

Director
Wetherill Engineering Inc.



Jim Smith, P.E.

Executive Director
ACEC/NC

2022 - 2023 Board of Directors

Executive Committee

PRESIDENT:

Mike Slusher, P.E.
Davis-Martin-Powell & Associates, INC
6415 Old Plank Road
High Point, NC 27265
Tel: (336) 886-4821
Email: mslusher@dmp-inc.com

PRESIDENT ELECT

Elizabeth Phipps, P.E.
KCI Associates of NC, PA
4601 Six Forks Road, Suite 220
Raleigh, NC 27609
Tel: (919) 783-92141
Email: liz.phipps@kci.com

VICE PRESIDENT

Stephen Greene, P.E.
Ramey Kemp Associates
5808 Farington Place, Ste. 100
Raleigh, NC 27609
Tel: (919) 872-5115
Email: sgreene@rameykemp.com

SECRETARY/TREASURER

Iona Thomas, AICP
McAdams Company
2905 Meridian Parkway
Durham, NC 27713
Tel: (919) 361-5000
Email: thomas@mcadamsco.com

NATIONAL DIRECTOR:

Paul Meehan, P.E.
HDR
555 Fayetteville Street, Suite 900
Raleigh, NC 27601
Tel: (919) 232-6611
Email: paul.meehan@hdrinc.com

Directors

Matt Fogleman, P.E.
ECS Southeast, LLP
1900 Hendersonville Rd., #10
Asheville, NC 28803
Tel: (828) 665-2307
Email: mfogleman@ecslimited.com

Michael L. Holder, P.E.
Gannett Fleming
One Glenwood Ave.
Ste. 900
Raleigh, NC 27603
Tel: (919) 420-7660
Email: mholder@gfnet.com

Kraig Kern, CPSM
W.K. Dickson & Co., Inc.
1213 W. Morehead St.
Ste. 300
Charlotte, NC 28208
Tel: (704) 334-5348
Email: kckern@wkdickson.com

Radha Krishna Swayampakala, P.E., PTOE
New 2 year term
RS&H Architects-Engineers-Planners, Inc.
1520 South Blvd., Suite 200
Charlotte, NC 28203
Tel: (704) 940-4788
Email: radhakrishna.swayampakala@rsandh.com

Patrick Waterman, P.E.
New 2 year term
LaBella Associates
400 South Tryon,
Ste. 1300
Charlotte, NC 28285
Tel: (585) 770-2519
Email: PWaterman@LaBellaPC.com

Eddie Wetherill, P.E.
New 2 year term
Wetherill Engineering, Inc.
559 Jones Franklin Rd., Ste. 164
Raleigh, NC 27606
Tel: (919) 851-8077
Email: ewetherill@wetherilleng.com

2022 - 2023 Junior Board of Directors



Jon Ford, P.E.
Vaughn & Melton



Trey Hendrick, P.E.
ECS Southeast



Will Larsen, P.E.
The Wooten Company



Katharine Mather, AICP
WSP



Farrell Nicholson, P.E.
LJB, Inc.



Sarab Nifong, P.E.
HDR



Seth Poole
Stantec



Lauren Triebert, P.E.
VHB Engineering NC,



Jay Watson, P.E.
Finch & Associates

2022 - 2023 Junior Board of Directors

Jon Ford, P.E.

Vaughn & Melton Consulting Engineers,
Inc.
1800 E Associates Ln.
Charlotte, NC 28217
Tel.: (704) 357-0488
Email: jcford@vaughnmelton.com

Trey Hendrick, P.E.

ECS Southeast, LLP
1812 Center Park Dr., Suite D
Charlotte, NC 28217
Tel.: (704) 525-5152
Email: thendrick@ecslimited.com

Will Larsen, P.E.

The Wooten Company
301 W. 14th St.
Greenville, NC 27834
Tel: (252) 757-1096
Email: wlarsen@thewootencompany.
com

Katharine Mather, P.E.

WSP
434 Fayetteville St., Suite 1500
Raleigh, NC 27601
Tel.: (919) 836-4040
Email: Katharine.Mather@wsp.com

Sarah Nifong, P.E.

HDR of the Carolinas
440 S. Church St., Suite 1000
Charlotte, NC 28202
Tel: (704) 338-6700
Email: sarah.nifong@hdrinc.com

Farrell Nicholson, P.E.

LJB, Inc.
1401 Aversboro Rd., Suite 215
Garner, NC 27529
Tel: (919) 594-6729
Email: fnicholson@ljbinc.com

Seth Poole, P.E.

Stantec Consulting Services, Inc.
801 Jones Franklin Rd., Suite 300
Raleigh, NC 27606
Tel.: (919) 851-6866
Email: Seth.Poole@stantec.com

Lauren Triebert, P.E.

VHB Engineering, NC, PC
940 Main Campus Dr., Suite 500
Raleigh, NC 27606
Tel.: (919) 741-5787
Email: ltrieb@vhb.com

Jay Watson, P.E.

Finch & Associates
309 N. Boylan Ave.
Raleigh, NC 27603
Tel.: (919) 818-9245
Email: jwatson@finch-associates.com

Table of Contents

| | |
|--|----------------|
| ACEC/NC Contact Information | Page i |
| ACEC/NC Standing Events & ACEC National Conferences | Page 2 |
| 2021 EEA Awards | Page 4 |
| ACEC National Executive Committee | Page 6 |
| Member Firm Fields of Practice | Page 7 |
| Member Firm Information | Page 9 |
| ACEC/NC Committees and Forums | Page 38 |
| Qualifications-Based Selection of Design Professionals | Page 40 |
| 3-Step QBS Process | Page 46 |
| Who We Are and the Benefits of Membership | Page 47 |
| ACEC/NC Index of Member Firms | Page 49 |
| Appendix A | Page 51 |

Please refer to the ACEC/NC website, www.acecnc.org, to find information regarding:

- Details & registration information for ACEC/NC Seminars & Membership Meetings
- Membership application forms
- Current & previous issues of the ACEC/NC newsletter
- ACEC/NC Constitution, Rules & Bylaws
- Information about the “ACEC NC/PAC” and “Engineering Companies for North Carolina” Independent Expenditure Account.
- Discussion groups for committees and forums

ACEC/NC 2022-2023 Standing Events

2022 JULY

July 4 HOLIDAY - OFFICE CLOSED

AUGUST

August 4-6 **ACEC/NC Summer Conference**
Asheville NC

SEPTEMBER

September 5 HOLIDAY - OFFICE CLOSED

September 20 **Business Practices Expo**
Greensboro, NC

September 28-29 **ACEC/NC Congressional Reception**
Washington, DC

NOVEMBER

TBD **Building & Infrastructure Symposium**

November 17 **Engineering Excellence Awards**
Pinehurst, NC

November 24-25 HOLIDAY - OFFICE CLOSED

November 30-December 1 **Transportation Conference**
Raleigh Convention Center, Raleigh, NC

DECEMBER

December 8 **Member Reception**
Charlotte, NC

December 15 **Holiday Party & ACEC/PAC Auction**
Raleigh, NC

December 26 HOLIDAY - OFFICE CLOSED

2023 JANUARY

January 2 HOLIDAY - OFFICE CLOSED

January 12 **Member Event with the Board**
Winston-Salem, NC

FEBRUARY

February 9 **Love Your PAC Reception**

TBD **Environmental & Energy Symposium**
Raleigh, NC

MARCH

TBD **Pitch FORE the PAC**
Charlotte, NC

TBD **ECNC Education & Advocacy Fundraising Event**

APRIL

TBA **Clay Shoot - Fundraiser for the State PAC -**
Raleigh, NC

JUNE

June 13-14, All Day **Consulting Congress Days**
Washington, DC

ACEC/National Conference Schedule through 2024

| DATE | LOCATION | CITY |
|---------------------|------------------------|----------------------|
| October 16-19, 2022 | The Broadmoor | Colorado Springs, CO |
| June 11-14, 2023 | Grand Hyatt Washington | Washington, D.C. |
| October 15-18, 2023 | JW Marriott Austin | Austin, TX |
| May 12-15, 2024 | Grand Hyatt Washington | Washington, D.C. |
| October 20-23, 2024 | Hyatt Regency | New Orleans, LA |



ACEC

Engineering Excellence Awards

Since 1967, U.S. engineering firms have entered their most innovative projects and studies in ACEC's annual Engineering Excellence Awards program (EEA)—"the Academy Awards of the engineering industry"—honoring the year's most outstanding engineering accomplishments. Projects that are winners at state level EEA competitions are eligible for ACEC's national EEA competition.

The projects are then judged by a distinguished panel of judges representing a cross section of industry, government, academia and media to rank the submissions on engineering excellence. Projects from throughout the world are rated on the basis of uniqueness and innovative applications; future value to the engineering profession; perception by the public; social, economic, and sustainable development considerations; complexity; and successful fulfillment of client/owner's needs, including schedule and budget.

2022 Engineering Excellence Awards

Each year the American Council of Engineering Companies (ACEC) of North Carolina selects the top project from North Carolina engineering firms to go forward to the national ACEC's annual Engineering Excellence Awards competition. Since 1967, U.S. engineering firms have entered their most innovative projects and studies in ACEC's annual Engineering Excellence Awards program (EEA)—'the Academy Awards of the engineering industry'—honoring the year's most outstanding engineering accomplishments. Projects that are winners at state level EEA competitions are eligible for ACEC's national EEA competition.

Engineering North Carolina's Future.

HENRY J. STIKES GRAND CONCEPTOR AWARD

We gathered for this year's Engineering Excellence Awards where several firms were recognized and awarded for various projects. This year, S&ME, Inc. was awarded the Grand Conceptor Award for the Dominion Energy T-072 Natural Gas Pipeline project. S&ME connected Duke Energy's Asheville Combined Cycle Station to provide cleaner energy to the region of roughly 450,000 homes across the Carolinas.

Ten firms were awarded the competition's second-highest honor.

The recipients of these "GRAND AWARDS" were:

- AECOM for the "SWIFT ISLAND HISTORIC ARCH BRIDGE WIDENING & REHABILITATION"
 - McKim & Creed for the "ENDERSONVILLE SOLID MANAGEMENT PLAN"
 - HDR for "CONNECT BEYOND"
- Rummel, Klepper & Kahl for the "US 64 ASHEBORO SOUTHERN BYPASS & ZOO CONNECTOR"
 - CDM Smith for the "RIVER ARTS DISTRICT TRANSPORTATION IMPROVEMENT (RADTIP)"
 - HDR for the "GREEN STREET PEDISTRIAN BRIDGE"
- McKim & Creed for the "UNC CHAPEL HILL'S KENAN LABORATORY INFRASTRUCTURE UPGRADE"
- STV Engineers, Inc. for the "SANITARY SEWER IMPROVEMENT ON RENTAL CAR ROAD AT CHARLOTTE DOUGLAS INTERNATIONAL AIRPORT"
 - WSP for THE "I-85 CABARRUS DESIGN-BUILD (I-3803A)"
- W.K. Dickson & Co., Inc. for the "CASWELL BEACH DUNE INFILTRATION PROJECT"

HONORS AWARD recipients are:

- Freese & Nichols for the "MONCCURE MEGASITE SEWER EXTENSION"
- CDM Smith for the "BROWN WTP AND WILLIAMS WTP RESIDUALS IMPROVEMENTS"
- Michael Baker International for the "CAROLINA CONNECTOR INTERMODAL TERMINAL (CCX)"
 - VHB Engineering, NC, PC for the "B-5905 BRIDGE REPLACEMENT"
- Wetherill Engineering, Inc. for the "WIL-COX PEDESTRIAN BRIDGE REHABILITATION"
 - WithersRavenel for the "PROJECT FORGE"
 - WSP for the "NC MOVES 2050"

The "NC KEYSTONE AWARD" was given to SENATOR VICKI SAWYER

ACEC/NC annually presents the "Engineering Excellence Awards" to honor and recognize engineering firms located in North Carolina for projects which demonstrate the highest degree of achievement, value and ingenuity.

Congratulations to all of our 2022 winners!

ACEC/NC Past Presidents, ACEC Fellows & ACEC Life Members

Past Presidents of ACEC/NC

| | | | | | | | |
|------|-------------------------|------|------------------------|------|----------------------|------|---------------------|
| 1968 | L. E. Wooten | 1983 | Ralph L. Whitehead | 1998 | Robert G. Wright | 2013 | Valoree K. Eikinas |
| 1969 | John D. Watson | 1984 | James N. Poole | 1999 | Jesse G. Hite | 2014 | Jeffery S. Douglas |
| 1970 | Irving W. Tourtellot | 1985 | E. J. Mogilnicki | 2000 | M. Steve Cavanaugh | 2015 | Bill S. Hood |
| 1971 | Richard H. Moore | 1986 | Herbert P. McKim Jr. | 2001 | Stephen J. Criscenzo | 2016 | Stephanie L. Hachem |
| 1972 | Charles A. Purcell, Jr. | 1987 | Donald H. Kline | 2002 | Gordon A. Rose | 2017 | Monty W. Irvin |
| 1973 | W. M. Piatt, III | 1988 | Ralph F. Gordon | 2003 | Willy E. Stewart | 2018 | Gary D. Hartong |
| 1974 | Robert S. Fullerton | 1989 | Robert J. Owens | 2004 | Barbara H. Mulkey | 2019 | Derek L. Clyburn |
| 1975 | Ben R. Huske | 1990 | D. Franklin Stephenson | 2005 | David L. Pond | 2020 | Scott M. Hinesley |
| 1976 | T. Curtiss Torrance | 1991 | Christopher H. Glass | 2006 | Richard C. Wells | 2021 | Paul A. Meehan |
| 1977 | C. Page Fisher | 1992 | Larry A. New | 2007 | Donald B. Chandler | | |
| 1978 | Robert J. Kimley | 1993 | M. Frank Tyndal | 2008 | Kenneth W. Smith | | |
| 1979 | Evan R. Minier | 1994 | Robert F. Grimes | 2009 | Bryan R. Odom | | |
| 1980 | Charles A. Willis | 1995 | J. Richard Cottingham | 2010 | Thomas F. Burchett | | |
| 1981 | Robert E. Lasater | 1996 | J. Edward Jenkins | 2011 | Steven L. Thomas | | |
| 1982 | James E. Stewart | 1997 | Michael E. Krannitz | 2012 | Randall A. Neuhaus | | |

ACEC Fellows

M. Steve Cavanaugh, Jr.
Cavanaugh & Associates, PA
530 North Trade St., Ste. 302
Winston-Salem, NC 27010

Richard C. Wells, P.E.
Kleinfelder
313 Gallimore Dairy Road
Greensboro, NC 27409

Stephanie L. Hachem, P.E.
Kimley-Horn & Associates
421 Fayetteville Street, Suite 600
Raleigh, NC 27601

ACEC Life Fellows

Robert G. Wright, CPA
708 Blenheim Drive
Raleigh, NC 27612

Leo A. Santowasso, PE, FACEC
340 Barton Hills Ct.
Pinehurst, NC 28374

Donald H. Kline, P.E.
5301 Sendero Drive
Raleigh, NC 27612

Joseph E. Hardee, FACEC
PO Box 25
Enfield, NC 27823

ACEC Life Members

William I. Bigger, P.E.
7205 N. Catamount Court
Raleigh, NC 27615

Donald H. Kline, P.E.
5301 Sendero Drive
Raleigh, NC 27612

Robert L. Martin, P.E., AICP
805 Merwin Road
Raleigh, NC 27606

ACEC/National Executive Committee

Chair, 2022-2023

W. Art Barrett, II
Gannett Fleming
300 E. Lombard St.
Suite 840
Baltimore, MD 21202

Chair-Elect, 2022-2023

Jay Wolverton
CHA Consulting
575 Broadway, Suite 301
Albany, NY 12207

Senior Vice Chair, 2022-2023

Melvin Williams
Terracon
1814 Reynolds Ave.
North Charleston, SC 29405

Treasurer, 2022-2024

Dan Larson
American Engineering Testing
550 Cleveland Ave. N
St. Paul, MN 55114

Vice Chair, 2022-2024

Thomas Cascino
AECOM
40 British American Blvd.
Latham, NY 12110

Vice Chair, 2022-2024

Ralph Guida
Guida Surveying
9241 Irvine Blvd., Suite 100
Irvine, CA 92618

Vice Chair, 2021-2023

Gary Hartong
The Wooten Company
120 N. Boyland Ave.
Raleigh, NC 27603

Vice Chair, 2021-2023

John Rathke
Mead & Hunt
1702 Lawrence Dr.
De Pere, WI 54115

Vice Chair, 2022-2024

Janice Marsters
Hayley & Aldrich
Waterfront Plaza
500 Ala Moana Blvd., Suite 6-250
Honolulu, HI 96813

NAECE President, 2022-2023

Joe Fiordaliso
ACEC New Jersey
310 West State St.
Trenton, NJ 0861846204

President and CEO

Linda Bauer Darr
ACEC/National
1400 L St., NW
Washington, DC 20005-3592

Member Firm Fields of Practice

The American Council of Engineering Companies of North Carolina are qualified to provide services in one or more of the engineering practice areas listed below:

Studies, Research, and Consulting Engineering Services

Building/Technology Systems

Structural Systems

Surveying and Mapping Technology

Environmental

Water and Stormwater

Water Resources

Transportation

Special Projects

Small Projects

Energy

Industrial and Manufacturing Processes and Facilities

Other

On the following pages, member companies are cross-referenced with the practice areas listed above to enable the reader to identify the firms who offer services in these specific areas. See individual member company websites for specific areas of practice and **Appendix A** for a breakdown of sub-areas.

Click on the search field on any of our webpages, search any “Member Firm Practice Area” above, and you will be presented with a list of our members who have identified that term as one of their operations.

Affiliate/Supplier members are also identified in the following listing. Affiliate/Supplier members provide professional services or products used in the internal operations of engineering firms.

For more specific information related to services, please consult the company listings in this directory.



ACEC/NC Member Firms



A Morton Thomas and Associates, Inc.

900 W Trade St. Ste 715
Charlotte, NC 28208

TEL: (704) 372-1885

EMAIL: nramirez@amtengineering.com

EMPS: 1500

Primary Contact: Nick Ramirez
nramirez@amtengineering.com

DESCRIPTION/DISCIPLINE:

Civil (Transportation); Construction Management; Surveying; Other

HEADQUARTERS:

800 King Farm Blvd, Fourth Floor
Rockville, MD 20850
Tel: (301) 881-2545

BRANCHES:

Delaware, DC, Maryland, NC,
Pennsylvania, Tennessee, Virginia,
West Virginia

Accelerate Engineering, PLLC

875 Walnut Street, Suite 316
Cary, NC 27511

TEL: 919-263-5678

EMAIL: Gavin.Teng@AccelerateEng.com

EMPS: 2

Primary Contact: Gavin Teng
Gavin.Teng@AccelerateEng.com

DESCRIPTION/DISCIPLINE:

Studies, Research, and Consulting Engineering Services: Basic Research and Studies, Project Feasibility Studies/Economic/, Expert Testimony, Public Outreach/Involvement, Value Engineering.
Transportation: Highways, Basic Research and Studies, Public Transit, Airports, Marine/Ports, Intermodal Facilities.

ACEC Business Insurance Trust

Affiliate/Supplier

3780 Mansell Road, Ste 370
Atlanta, GA 30022

TEL: (833) 223-2248

EMAIL: Jeff.connelly@greyling.com

EMPS: 5

Primary Contact: Jeff Connelly
Jeff.connelly@greyling.com

DESCRIPTION/DISCIPLINE:

The ACEC Business Insurance Trust (BIT) provides the only Business Insurance Program endorsed by ACEC. In addition to providing Business Insurance, The BIT also provides Professional Liability and Management Liability Insurance to members of ACEC.

ACEC Life/Health Insurance Trust

Affiliate/Supplier

2600 Network Blvd.
Suite 230

Frisco, TX 75034

TEL: (469) 200-4583

EMPS: 9

Primary Contact: Lana Oxsen
lana@aceclifehealthtrust.com

DESCRIPTION/DISCIPLINE:

The ACEC Life/Health Trust provides healthcare benefit solutions and services to support the business objectives of ACEC member firms and the health and wellbeing of their employees and families.

ACEC Retirement Trust

Affiliate/Supplier

1510 Woodstock Rd.
Roswell, GA 30075

TEL: (248) 535-3300

Primary Contact: Lydia Zabrycki
Lydia.zabrycki@captrust.com

ACRO Development Services

601 S. Cedar St
Suite 101

Charlotte, NC 28202

TEL: (704) 716-5680

EMAIL: dburke@acro-ds.com

EMPS: 19

Primary Contact: Dave Burke
dburke@acro-ds.com

DESCRIPTION/DISCIPLINE:

Civil Engineering and Survey

Adams & Hodge Engineering, PC

314 E. Main St.

Clayton, NC 27520

TEL: (919) 763-2780

EMAIL: holland@adamsandhodge.com

EMPS: 8

Primary Contact: Donnie Adam
donnie@adamsandhodge.com

DESCRIPTION/DISCIPLINE:

We are a Civil Engineering firm located in Clayton, NC that specializes in residential and commercial land development design.

AECOM

5438 Wade Park Blvd
Suite 200

Raleigh, NC 27607

TEL: (919) 854-6222

EMAIL: greg.watkins@aecom.com

EMPS: 480

Primary Contact: Greg Watkins
Greg.Watkins@aecom.com

DESCRIPTION/DISCIPLINE:

Architectural/Structural; Civil (Environmental); Civil (General Municipal); Civil (Transportation); Energy; Hazardous Waste; Hydrology; Hydrogeology; Industrial; Planning; Water; Other

BRANCHES:

NC AECOM offices:

CHARLOTTE

5925 Carnegie Blvd Suite 370

Charlotte, NC 28209

TEL: (704) 553-6150

CHARLOTTE

Construction Services

7207 IBM Drive M/C: CLT-3A Charlotte,
NC 28262-4307

TEL: (704) 805-2810

CHARLOTTE

6000 Fairview Rd Ste 200 Charlotte,
NC 28210

TEL: (704) 522-0330

MORRISVILLE

1600 Perimeter Park Dr, Ste 400
Morrisville, NC 27560

TEL: (919) 461-1100

RALEIGH
Professional Engineering Services
701 Corporate Center Dr, Ste 475
Raleigh, NC 27607
TEL: (919) 854-6200

WILMINGTON
201 North Front Street, Suite 509
Wilmington, NC 28401
TEL: (910) 763 806

Aerial Analytics LLC

Affiliate/Supplier
7151 O'Kelly Chapel Rd
Cary, NC 27519
TEL: (919) 417-2343
EMAIL: pnilsen@aerial-analytics.com
Primary Contact: Peter Nilsen
pnilsen@aerial-analytics.com

DESCRIPTION/DISCIPLINE:

Aerial Analytics is a remote sensing data collection provider that utilizes advanced UAV-based LiDAR and thermal sensors to inspect, collect, analyze and model natural and man made environments.

Alley, Williams, Carmen & King, Inc.

740 Chapel Hill Road
Burlington, NC 27215
TEL: (336) 226-5534
EMAIL: mreich@awck.com
EMPS: 32
Primary Contact: Mark Reich
mreich@awck.com

DESCRIPTION/DISCIPLINE:

Civil (General Municipal); Civil (Transportation); Hydrology; Mining; Planning; Surveying; Water; Other

American Engineering Associates - Southeast, PA

8008 Corporate Center Drive
Suite 110
Charlotte, NC 28226
TEL: 704-375-2438
EMAIL: cjohnson@american-ea.com
EMPS: 29
Primary Contact: Chris Johnson
cjohnson@american-ea.com

DESCRIPTION/DISCIPLINE:

Civil Engineering; Environmental; Planning

& Landscape Architecture; Project & Construction Management; Real Estate Due Diligence; Structural Engineering / Facilities; Transportation

Ames & Gough, Inc.

Affiliate/Supplier
8300 Greensboro Drive
Suite 980
McLean, VA 22102
TEL: (703) 827-2277
EMAIL: mgough@amesgough.com
Primary Contact: Matt Gough
mgough@amesgough.com

DESCRIPTION/DISCIPLINE:

Ames & Gough is an independent insurance agency providing insurance and risk management solutions for architects, engineers, environmental consultants, law firms and non-profit associations.

Andrew Consulting Engineers, PC

3811 Peachtree Avenue, Ste. 300
Wilmington, NC 28403
TEL: (910) 202-5555
EMAIL: neal@andrewengineers.com
EMPS: 6
Primary Contact: Neal Andrew
neal@andrewengineers.com

DESCRIPTION/DISCIPLINE:

Expert Testimony, Value Engineering; Foundations, Buildings, Towers, Stadiums, Seismic Design. Marine/Ports. Recreational Facilities, Program and Construction Management.

Arcadis G&M Of North Carolina, Inc.

Wade 1 in Wade Office Park
5420 Wade Park Blvd, Suite 350
Raleigh, NC 27607
TEL: (919) 854-1282
EMAIL: nilesh.surti@arcadis.com
EMPS: 80
Primary Contact: Nilesh Surti
nilesh.surti@arcadis.com

DESCRIPTION/DISCIPLINE:

Infrastructure - Highways and Transit; Infrastructure - Buildings; Water; Environmental

Areté Engineers

7668 Valley Boulevard

Blowing Rock, NC 28605
TEL: (828) 434-0587
EMAIL: shawn@areteengineers.com
EMPS: 10
Primary Contact: Shawn Ausel
shawn@areteengineers.com

DESCRIPTION/DISCIPLINE:

Civil (Geotechnical), Civil (Structure), Civil (Transportations), Construction Management, Hydrology

ATCS

100 Regency Forest Drive
Suite 130
Cary, NC 27518
TEL: (919) 439-1622
EMAIL: mfendrick@atcsplc.com
EMPS: 5
Primary Contact: Brian Riffel
briffel@atcsplc.com

DESCRIPTION/DISCIPLINE:

Construction Services, Emergency Management Services, Environmental Services, Federal Infrastructure, Land Development, Surveying, Transportation Design, Traffic Engineering, Transportation Planning, Water Resources

BRANCH:

VIRGINIA
2553 Dulles View Drive,
Suite 300 | Herndon, VA 20171
P: 703-430-7501
F: 703-430-0889
blogsdon@atcsplc.com

Atkins

1616 East Millbrook Road
Suite 160
Raleigh, NC 27609

EMAIL: Jeffrey.Reck@AtkinsGlobal.com

EMPS: 124

Primary Contact: Courtney Taylor
courtney.taylor@atkinsglobal.com

DESCRIPTION/DISCIPLINE:

DISCIPLINES: Civil (Environmental); Civil (General Municipal); Civil (Structural); Civil (Transportation); Construction Management; Energy; Hydrology; Planning; Water; Other

Atlantec Engineers

3221 Blue Ridge Rd.
Suite 113
Raleigh, NC 27612

TEL: (919) 571-1111

EMAIL: david@atlantecengineers.com

EMPS: 11

Primary Contact: David Whitney
david@atlantecengineers.com

DESCRIPTION/DISCIPLINE:

Plumbing, Mechanical, and Electrical consulting engineering

Aztech Inc.

3408 Kemble Ridge Drive
Wake Forest, NC 27587

TEL: (919) 630-9164

EMAIL: rstephenson@nc.rr.com

EMPS: 1

Primary Contact: Ralph Stephenson
rstephenson@nc.rr.com

DESCRIPTION/DISCIPLINE:

Facility Consulting Services



B2E, Inc.

800 Park Offices Drive, Suite 3712
Durham, NC 27709

TEL: (919) 349-1939

EMAIL: CWhite@eosremediation.com

EMPS: 7

Primary Contact: Carolyn White
CWhite@eosremediation.com

DESCRIPTION/DISCIPLINE:

DISCIPLINES: Civil (Environmental); Computer Applications; Hazardous Waste; Hydrology; Hydrogeology

Baldwin Design Consultants

1700-D East Arlington Blvd
Greenville, NC 27858

TEL: (252) 756-1390

EMAIL: dpoaletti@baldwindesignconsultants.com

EMPS: 10

Primary Contact: Dawn Poaletti
dpoaletti@baldwindesignconsultants.com

DESCRIPTION/DISCIPLINE:

Engineering, Surveying, Planning Firm

Bass, Nixon, and Kennedy, Inc.

6310 Chapel Hill Road, Ste. 250
Raleigh, NC 27607

TEL: (919) 851-4422

EMAIL: matt.burleson@BNKinc.com

EMPS: 66

Primary Contact: Matthew Burleson
matt.burleson@bnkinc.com

DESCRIPTION/DISCIPLINE:

DISCIPLINES: Civil (Environmental); Civil (General); Construction Management;

Electrical; Energy; Hydrology; Mechanical; Fire Protection; Plumbing; Land Surveying;

BDC

Affiliate/Supplier

1404 Forest Berry Ct
Fuquay Varina, North Carolina 27526

TEL: (919) 271-6780

EMAIL: bgraham.usa@gmail.com

EMPS: 1

Primary Contact: Bob Graham
bgraham.usa@gmail.com

DESCRIPTION/DISCIPLINE:

Management Consulting specializing in staff development and resulting improvements

Becker Morgan Group

3333 Jaeckle Drive, Suite 120
Wilmington, NC 28403

TEL: (910) 341-7600

EMAIL: mstrickland@beckermorgan.com

EMPS: 15

Primary Contact: Mark Strickland
MStrickland@beckermorgan.com

DESCRIPTION/DISCIPLINE:

Becker Morgan Group is a full service design firm specializing in architecture, engineering, surveying, land planning and interior design.

Benesch

8000 Regency Parkway, Suite 175
Cary, NC 27518

TEL: (984) 275-2490

EMAIL: gstewart@benesch.com

EMPS: 23

Primary Contact: Greg Stewart
gstewart@benesch.com

DESCRIPTION/DISCIPLINE:

DISCIPLINES: Civil (General Municipal), Civil (Structural), Civil (Transportation, Construction Management, Planning and Environmental

Bolton & Menk, Inc.

1960 Premier Drive
Mankato, Minnesota 56001

TEL: (507) 625-4171

EMAIL: Kyler.Bender@bolton-menk.com

EMPS: 1

Primary Contact: Kyler Bender
Kyler.Bender@bolton-menk.com

DESCRIPTION/DISCIPLINE:

Bolton & Menk specializes in providing public infrastructure solutions. For seven decades, we have been committed to improving quality of life through engineering excellence and client satisfaction.

ACEC of North Carolina
advocates for **ECONOMIC
DEVELOPMENT** in every
county of our state and
lobbies for the competitive
programs to grow jobs
and the economy.



Borum, Wade and Associates, P.A.

621 Eugene Court, Suite 100
Greensboro, NC 27401

TEL: (336) 275-0471

EMAIL: hswade@borum-wade.com

EMPS: 26

Primary Contact: Gene Mustin
genemustin@borum-wade.com

DESCRIPTION/DISCIPLINE:

A civil engineering, land planning and surveying firm located in Greensboro, North Carolina. Established in 1961.

BREE & Associates, Inc.

Highgate Office Center; 5315 Highgate Drive, Ste. 203

Durham, NC 27713

TEL: (919) 387-3338

EMAIL: bree@breeassociates.com

EMPS: 5

Primary Contact: Robert Lancaster
bree@breeassociates.com

DESCRIPTION/DISCIPLINE:

DISCIPLINES: Civil (General Municipal); Civil (Transportation); Construction Management; Planning; Cost Estimating/Scheduling, Document Control, and AutoCADD

Brown Consultants

30 Ben Lippen School Road
Asheville, NC 28806

TEL: (828) 350-7685

EMAIL: jtbrown@brownpa.net

EMPS: 3

Primary Contact: Jeffery Brown, PE
MCE
jtbrown@brownpa.net

DESCRIPTION/DISCIPLINE:

Civil (Environmental), Civil (General Municipal), Construction Management, Planning, Water

C2 Engineering Solutions, PLLC

8510 McAlpine Park Dr.
Suite 206

Charlotte, NC 28211

TEL: (540) 314-1578

EMAIL: ryan@c2e.solutions

EMPS: 6

Primary Contact: Ryan Caya
rcaya776@gmail.com

DESCRIPTION/DISCIPLINE:

DISCIPLINES: Electrical; Mechanical

Cape Fear Engineering

151 Poole Road

Suite 100

Belville, NC 28451

TEL: (910) 383-1044

EMAIL: jeff.williams@
capefearengineering.com

EMPS: 50

Primary Contact: Jeff Williams
jeff.williams@capefearengineering.com

DESCRIPTION/DISCIPLINE:

DISCIPLINES: Civil (Environmental); Civil; surveying; GEOTechnical, and Architectural services

Carolinas Geotechnical Group, PLLC

2400 Crownpoint Executive Drive
Suite 800

Charlotte, North Carolina 28227

TEL: (980) 339-8684

EMAIL: contact@carolinasgeotech.com

EMPS: 4

Primary Contact: Rob Kral
rkral@carolinasgeotech.com

DESCRIPTION/DISCIPLINE:

We are a geotechnical engineering consulting firm concentrating in design services to the department of transportation arena.

Catlin Engineers & Scientists

220 Old Dairy Road
Wilmington, NC 28405

TEL: (910) 452-5861

EMAIL: info@CatlinUSA.com

EMPS: 37

Primary Contact: Jason Catlin
Jason.Catlin@CatlinUSA.com

DESCRIPTION/DISCIPLINE:

DISCIPLINES: Civil (Environmental); Civil (Geotechnical); Civil (General Municipal); Hazardous Waste; Hydrology; Hydrogeology; Water; Other

BRANCH OFFICE:

1044 Washington Street

Raleigh, NC 27605

Tel: (919) 838-2875

Fax: (919) 838-6682

Contact: Bill Walsh

Email: bill.walsh@catlinusa.com

CDM Smith

5400 Glenwood Avenue, Ste. 400
Raleigh 27612

TEL: (919) 325-3500

EMAIL: keiserdz@cdmsmith.com

EMPS: 149

Primary Contact: Hisham Abdelaziz
abdelazizhk@cdmsmith.com

DESCRIPTION/DISCIPLINE:

DISCIPLINES: Civil (General Municipal); Civil (Geotechnical); Civil (Structural); Civil (Transportation); Construction Management; Hydrology; Planning; Surveying; Water; Other

CH Engineering, PLLC

3220 Glen Royal Road

Raleigh, NC 27617

TEL: (919) 788-0224 (Ext 5462)

EMAIL: mchambliss@ch-engr.com

EMPS: 31

Primary Contact: Maha Chambliss
mchambliss@ch-engr.com

DESCRIPTION/DISCIPLINE:

DISCIPLINES: Civil (General Municipal); Civil (Transportation); Surveying; Water; Other

Charlotte Engineers, LLP

5838 Monroe Road
Charlotte, NC 28212

TEL: (704) 531-3000

EMAIL: meaves@charlotteengineers.
com

EMPS: 17

Primary Contact: Michael Eaves
meaves@charlotteengineers.com

DESCRIPTION/DISCIPLINE:

Mechanical, Electrical, Plumbing, and Fire Protection

Cheatham & Associates, PA

3412 Enterprise Drive
Wilmington, NC 28405

TEL: (910) 452-4210

EMAIL: office@cheathampa.com

EMPS: 13

Primary Contact: Kenneth Lynch
klynch@cheathampa.com

DESCRIPTION/DISCIPLINE:

DISCIPLINES: Electrical, Mechanical, Plumbing, Fire Protection

Civil Consultants, Inc.

3708 Lyckan Parkway
Suite 201

Durham, NC 27707

TEL: (919) 490-1645

EMAIL: tony.whitaker@civil-consultants.com

EMPS: 6

Primary Contact: Tony Whitaker
tony.whitaker@civil-consultants.com

DESCRIPTION/DISCIPLINE:

Land Planning, Civil Engineering, Approvals & Permits, Construction Support

Civil Design Concepts, PA

168 Patton Avenue
Asheville, NC 28801

TEL: (828) 252-5388

EMAIL: pbradshaw@cdcgo.com

EMPS: 29

Primary Contact: Christopher Eller
celler@cdcgo.com

DESCRIPTION/DISCIPLINE:

DISCIPLINES: Civil (Environmental); Civil (General Municipal); Planning; Water

BRANCH:

WAYNESVILLE:

52 Walnut Street, Suite 9
Waynesville, NC 28786

CJS Conveyance, PLLC

320 S. Academy Street
Cary, NC 27511

TEL: (919) 890-3876

EMAIL: cwindley@cjsconveyance.com

EMPS: 10

Primary Contact: Chris Windley
cwindley@cjsconveyance.com

DESCRIPTION/DISCIPLINE:

CJS Conveyance provides professional engineering services related to water and sewer infrastructure design and construction. We provide these services for municipal and private clients.

Clark Nexsen

333 Fayetteville Street, Ste 1000
Raleigh, NC 27601

TEL: (919) 828-1876

EMAIL: thall@clarknexsen.com

EMPS: 94

Primary Contact: Terry Hall
thall@clarknexsen.com

DESCRIPTION/DISCIPLINE:

DISCIPLINES: Architectural/Structural; Civil (Environmental); Civil (General Municipal); Civil (Transportation); Communications; Electrical; Mechanical; Planning; Other

BRANCHES:

CHARLOTTE

1523 Elizabeth Avenue, Ste. 300
Charlotte, NC 28204

Tel: (704) 377-8800

Fax: (704) 358-1037

Branch Contact: Jason Jones

E-mail: jjones@clarknexsen.com

16

ASHEVILLE

301 College Street, Suite 300
Asheville, NC 28801

Tel: (828) 232-0608

Fax: (828) 232-1606

Branch Contact: Chad Roberson

EMAIL: croberson@clarknexsen.com

CLH Design, PA

400 Regency Forest Drive, Ste. 120
Cary, NC 27518

TEL: (919) 319-6716

EMAIL: clhdesign@clhdesignpa.com

EMPS: 21

Primary Contact: Steven Miller
smiller@clhdesignpa.com

DESCRIPTION/DISCIPLINE:

Water and Stormwater: Stormwater Management; Erosion Control. Water Resources: Hydraulics, Hydrology. Special Projects: Land Development, Recreational Facilities, Educational Facilities

Client Savvy

Affiliate/Supplier

500 Westover Dr. #19970

Sanford, NC 27330

TEL: (919) 573-1730

EMAIL: answers@clientsavvy.com

Primary Contact: Ryan Suydam
ryan@clientsavvy.com

DESCRIPTION/DISCIPLINE:

Client Savvy enables professionals to become client savvy by enabling them to design, implement, and measure the client experience. We deliver client insights that drive loyalty and fuel growth personally, professionally, and corporately. By empowering professional to build positive relationships and solve clients' real problems, we unleash their value potential for the people they serve. Client Savvy created the widely-used Client Feedback Tool, and founded the annual Client Experience in Professional Services Conference (CXps).

Coastal Engineering & Surveying, Inc.

4425 N. Croatan Highway
Kitty Hawk, NC 27949

TEL: (252) 261-4151

EMAIL: jalene@coastales.com

EMPS: 14

Primary Contact: Jalene Watts-Dorris
jalene@coastales.com

DESCRIPTION/DISCIPLINE:

DISCIPLINES: Civil (General Municipal); Civil (Structural); Surveying

Colliers Engineering & Design

2000 Regency Pkwy, Ste 295
Cary, North Carolina 27518

TEL: (919) 439-6082

EMAIL: gbuchholz@maserconsulting.com

EMPS: 54

Primary Contact: Lisa Alfaro
lisa.alfaro@colliersengineering.com

DESCRIPTION/DISCIPLINE:

Colliers Engineering & Design CT, P.C. is a trusted provider of multi-discipline engineering, design and consulting services to public and private sector clients. We specialize in providing a comprehensive suite of services through talented professionals in offices nationwide who utilize the most advanced technologies to deliver customized solutions for our clients

CONSOR

116 Gasoline Alley
Suite 109
Mooresville, NC 28117

TEL: (410) 790-0788

EMAIL: ahall@consoreng.com

EMPS: 7

Primary Contact: Nicole Fournier
nfournier@consoreng.com

DESCRIPTION/DISCIPLINE:

Engineering Firm

Construction Materials Engineering & Consulting, PC

4401 Shopton Road
Charlotte, NC 28217

TEL: (704) 361-8104

EMAIL: jim@cmeccpc.net

EMPS: 12

Primary Contact: Jim Magennis
jim@cmeccpc.net

Corporate Tax Advisors

Affiliate/Supplier

7501 Memorial Parkway SW
Suite 204
Huntsville, AL 35802

TEL: (256) 419-5546

EMAIL: heatherf@corporatetaxadvisors.com

Primary Contact: Heather Fisher
heatherf@corporatetaxadvisors.com

DESCRIPTION/DISCIPLINE:

CTA acts as an extension of a company's

accounting team to capture valuable tax incentives.

CPL (Clark Patterson Lee, P.C.)

1620 Hillsborough Street, Suite A
Raleigh, NC 27605

TEL: (919) 645-9001

EMAIL: Jharper@cplteam.com

EMPS: 35

Primary Contact: Jennifer Harper
jharper@cplteam.com

DESCRIPTION/DISCIPLINE:

Engineering, Architecture, Transportation Planning

CriTek Engineering Group, P.C.

1 Centerview Drive
Suite 307
Greensboro, North Carolina 27407

TEL: (336) 348-1889

EMAIL: dcrite@critekgroup.com

EMPS: 2

Primary Contact: Dawayne Crite
dcrite@critekgroup.com

DESCRIPTION/DISCIPLINE:

CriTek is a civil and environmental engineering firm with a concentration in water resources engineering.

CS4 Services North Carolina Associate (Non Lic.)

775 Arrow Point Ln
Davidson, NC 28036

TEL: (678) 772-0496

EMAIL: carlton.sellars@cs4services.com

EMPS: 2

Primary Contact: Carlton Sellars
carlton.sellars@cs4services.com

DESCRIPTION/DISCIPLINE:

Subsurface Utility Mapping firm located in Davidson, NC. Serving engineers and surveyors by providing the needed utility data needed to keep projects moving forward.



Davenport

119 Brookstown Ave, Ste PH 1
Winston-Salem, North Carolina 27101

TEL: (336) 744-1636

EMAIL: jdavenport@davenportworld.com

EMPS: 41

Primary Contact: RYANNE DAVIS
rmdavis@davenportworld.com

DESCRIPTION/DISCIPLINE:

DISCIPLINES: Civil (Environmental)
Civil (Transportation); Planning; Site
Civil, Environmental Consulting,
Environmental Remediation

BRANCHES:

VIRGINIA:

1100 Boulders Parkway, Richmond, VA,
23225

Tel: (804) 381-0581

Contact: Nick Liguori

EMAIL: nliguori@davenportworld.com

ASHEVILLE

206 Executive Park
Asheville, NC 28801

Tel: 828-398-4528

Contact: Lori Boyer

EMAIL: lboyer@davenportworld.com

CHARLOTTE

5200 77 Center Drive, Suite 325
Charlotte, NC 28217

Tel: (704) 200-2864

Edith Peters

EMAIL: epeters@davenportworld.com

RALEIGH

4600 Marriott Dr., Suite 350
Raleigh, NC 27612

Tel: (919) 324-1665

Contact: Dionne Brown

EMAIL: dbrown@davenportworld.com

WILMINGTON

5917 Oleander Dr., Ste 206,
Wilmington, NC 28403

Tel: (910) 550-3741

Contact: Don Bennett

dbennett@davenportworld.com

Davis-Martin-Powell & Associates, Inc.

6415 Old Plank Road
High Point, NC 27265
TEL: (336) 886-4821
EMAIL: mslusher@dmp-inc.com
EMPS: 39
Primary Contact: Cristy Anders
canders@dmp-inc.com

DESCRIPTION/DISCIPLINE:

DISCIPLINES: Civil (Environmental); Civil (General Municipal); Civil (Transportation); Hydrology; Planning; Surveying; Water; Other

BRANCHES:

WINSTON-SALEM
Office: 815 Burke Street,
Winston-Salem, NC 27101
Contact: Michael Goliber
EMAIL: mgoliber@dmp-inc.com
Tel: (336) 819-8477

DELTA |v| Forensic Engineering, Inc.

9800 Southern Pine Blvd
Suite J
Charlotte, NC 28273
TEL: (704) 525-5700
EMAIL: info@deltavinc.com
EMPS: 53
Primary Contact: Maggie Melkus
mmelkus@deltavinc.com

DESCRIPTION/DISCIPLINE:

DISCIPLINES: Mechanical; Other, Forensic

Delta Airport Consultants, Inc.

11111 Carmel Commons Blvd.
Suite 435
Charlotte, NC 28226
TEL: (704) 521-9101
EMAIL: dsander@deltaairport.com
Primary Contact: Douglas Sander
dsander@deltaairport.com

DESCRIPTION/DISCIPLINE:

Delta Airport Consultants, Inc., established in 1978, is dedicated to aviation and specializes exclusively in full-service airport consulting.

Delta Oaks Group

4904 Professional Drive, Second Floor
Raleigh, NC 27609
TEL: (919) 457-1099
EMAIL: mbowers@deltaoaksgroup.com
EMPS: 25
Primary Contact: Kimberlee Hoffman
khoffman@deltaoaksgroup.com

DESCRIPTION/DISCIPLINE:

Delta Oaks Group is a growing engineering company located in NC doing Civil / A&E, Environmental, Geotechnical, Inspection & Structural Services specializing in the Telecom industry.

Dewberry

2610 Wycliff Road
STE 410
Raleigh, NC 27607
TEL: (919) 881-9939
EMAIL: jadams@dewberry.com
EMPS: 201
Primary Contact: Matthew West
mwest@dewberry.com

DESCRIPTION/DISCIPLINE:

Civil (General Municipal); Civil (Structural); Civil (Transportation); Electrical; Energy; Mechanical; Surveying; Water/Wastewater; Stormwater; Federal; Plumbing; Telecommunications

BRANCHES:

CHARLOTTE
9300 Harris Corners Pkwy, Ste 220
Charlotte, NC 28269
Tel: (704) 509-9918

Diehl & Phillips, P.A., Consulting Engineers

1500 Piney Plains Road, Suite 200
Cary, NC 27518
TEL: (919) 467-9972
EMAIL: jfphillips@bellsouth.net

ACEC of North Carolina
advocates for clean,
RENEWABLE ENERGY USE
in our state and lobbies for
a diversified, sustainable
energy portfolio.

EMPS: 5

Primary Contact: John Phillips
jfphillips@bellsouth.net

DESCRIPTION/DISCIPLINE:

DISCIPLINES: Civil (Environmental); Civil (General Municipal); Water; Other

DJG Inc

225 S West Street
Raleigh, NC 27603
TEL: (757) 253-0673
EMAIL: dbooth@djginc.com
EMPS: 3
Primary Contact: Donald Booth
dbooth@djginc.com

DESCRIPTION/DISCIPLINE:

A multi-discipline architecture and engineering firm headquartered in Virginia with an office in Raleigh, focusing on turn key building and site design solutions for both public and private clients.

Draper Aden Associates

114 Edinburgh South Drive
Suite 200
Raleigh, NC 27511
TEL: (919) 827-0864
EMAIL: tclayton@daa.com
EMPS: 42
Primary Contact: Tyrus Clayton
tclayton@daa.com

DESCRIPTION/DISCIPLINE:

DISCIPLINES: Civil (Environmental, General Municipal, Geotechnical, Structural, Transportation) Construction Management; Energy; Hazardous Waste; Hydrogeology; Hydrology; Planning; Surveying ; Water

BRANCHES:

FAYETTEVILLE
225 Green Street, Ste. 310, Fayetteville, NC, 28301,
In the Systel Bldg.

DRMP, Inc.

4235 South Stream Blvd #150
Charlotte, NC 28217
TEL: (704) 332-2289
EMAIL: jbeck@drmp.com
EMPS: 84
Primary Contact: Jim Beck
jbeck@drmp.com

DESCRIPTION/DISCIPLINE:

DISCIPLINES: Civil (Environmental); Civil (General Municipal); Civil (Structural); Civil (Transportation); Construction Management; Hydrology; Planning; Surveying; Water; Other

BRANCHES:**CARY**

8000 Regency Parkway, Suite 110, Cary, NC 27518

Primary Rep | Robert Walker rwalker@drmp.com

Tel: (919) 650-1038

ASHEBORO

1342 E Salisbury Street, Asheboro, NC 27203

Primary Rep | Jeff Loflin jloflin@drmp.com

Tel: (336) 628-5849

TROUTMAN

149 Houston Road, Suite A, Troutman, NC 28166

Primary Rep | Matt Elliott melliott@drmp.com

Tel: (980) 444-3341

Durisol Noise Barrier Systems

Affiliate/Supplier

8640 Broad Street

P.O. Box 708

Rural Hall, NC 27045

TEL: (336) 688-4104

EMAIL: justin.holton@durisol.com

EMPS: 8

Primary Contact: Michael Pruden

michael.pruden@durisol.com

DESCRIPTION/DISCIPLINE:

Manufacturer of noise barrier systems to include Durisol Absorptive, Transparent Systems, and TL-4 crash tested noise barrier system

**E. L. Robinson Engineering Co.**

3362 Six Forks Road

Raleigh, NC 27609

TEL: (984) 960-2810

EMAIL: pmattox@elrobinson.com

EMPS: 200

Primary Contact: Dean Hatfield

dhatfield@elrobinson.com

DESCRIPTION/DISCIPLINE:

Structural Systems, Studies, Research & Consulting Engineering Surveying & mapping Technology, Transportation, Water Resources, Water & Stormwater; Cultural Resources; GIS; Environmental Assessment; NEPA – CE's, EA's, EIS's; Construction Inspection; Transportation Planning; Traffic Modeling; WZTC; Civil Site.

Disciplines: Civil (Environmental), Civil (General Municipal), Civil (Geotechnical), Civil (Structural), Civil (Transportation), Communications Computer Applications, Construction Management, Hydrogeology, Hydrology, Materials Handling, Mining Planning, Surveying, Water, and Emergency Management

ECS Southeast, LLP

5260 Greens Dairy Road
Raleigh, NC 27617

TEL: (919) 861-9910

EMAIL: DClyburn@ecslimited.com

EMPS: 343

Primary Contact: Derek Clyburn, PE

DClyburn@ecslimited.com

DESCRIPTION/DISCIPLINE:

ECS provides Geotechnical, Environmental, Construction Materials Testing, Industrial Hygiene and Building Envelope consulting services. ECS also provides reinforced earth design and geotechnical deep foundation design services.

BRANCHES:**ASHEVILLE**

1900 Hendersonville Rd., Ste 10
Asheville, NC 28803

CHARLOTTE

1812 Center Park Drive, Suite D
Charlotte, NC 28217

GREENSBORO

4811 Koger Boulevard, Greensboro, NC 27404

(336) 856-7150

WINSTON-SALEM

2511 Neudorf Road, Suite N Clemmons, NC 27012

WILMINGTON

6714 Netherlands Drive
Wilmington, NC 28405

910-686-9114

FAYETTEVILLE

6151 Raeford Road

Suite A

Fayetteville, NC 28304

910-401-3288

GREENVILLE

1200 Woodruff Road
Suite H-12

Greenville, SC 29607

864-987-1610

SWANSBORO

1048 West Corbett Avenue
Swansboro, NC 28584

910-326-2627

Eden & Associates, P.C.

227 W. 4th Street

Suite 100

Charlotte, NC 28202

TEL: (804) 479-0351

EMAIL: mark@edenandassociates.com

EMPS: 3

Primary Contact: Mark McGuire

mark@edenandassociates.com

DESCRIPTION/DISCIPLINE:

Eden & Associates P.C. was founded in 1999 and currently provides engineering consulting, planning and construction management services to various clients in Virginia and North Carolina.

Edmondson Engineers, PA

700 Executive Park; 1920 Hwy 54
Durham, NC 27713

TEL: (919) 544-1936

EMAIL: charles.crowl@edmondsonengineers.com

edmondsonengineers.com

EMPS: 16

Primary Contact: Charles Crowl

charles.crowl@edmondsonengineers.com

DESCRIPTION/DISCIPLINE:

DISCIPLINES: Electrical; Mechanical and Plumbing

Energy Land & Infrastructure

136 Quade Dr
Cary, NC 27513

TEL: (919) 234-1974

EMAIL: Joel.smith@eli-llc.com

EMPS: 19

Primary Contact: Joel Smith
Joel.smith@eli-llc.com

DESCRIPTION/DISCIPLINE:

DISCIPLINES: Civil (Environmental); Civil (Gen. Municipal); Civil (Structural); Civil (Transportation) Construction Mgmt.; Energy; Hydrology; Surveying; Water

Engineered Construction Co., Inc

900 Paverstone Drive, Suite 200
Raleigh, NC 27615

TEL: (919) 954-9090

EMAIL: dawnflump@aol.com

EMPS: 10

Primary Contact: Scott Dawson
dawnflump@aol.com

DESCRIPTION/DISCIPLINE:

DISCIPLINES: Construction Management; Planning; Surveying

Engineered Designs, Inc.

1151 SE Cary Parkway, Ste. 200
Cary, NC 27518

TEL: (919) 851-8481

EMAIL: gscoggins@engineereddesigns.com

EMPS: 21

Primary Contact: M. Ginger Scoggins
gscoggins@engineereddesigns.com

DESCRIPTION/DISCIPLINE:

Studies, Research, and Consulting Engineering Services: Project Feasibility Studies/Economic; Value Engineering. Building/Technology Systems: Mechanical/Electrical /Plumbing; Energy Efficiency - New and Retrofit.

ESP Associates, Inc.

2200 Gateway Centre Blvd.
Suite 216

Morrisville, NC 27560

TEL: (919) 678-1070

EMAIL: bfwelch@espassociates.com

EMPS: 146

Primary Contact: Brian Welch
bfwelch@espassociates.com

DESCRIPTION/DISCIPLINE:

Description: ESP Associates, Inc. is a multi-discipline engineering design and consulting firm providing our clients with civil engineering, surveying, planning/landscape architecture, geosciences, environmental, subsurface utility engineering, and construction engineering inspection.

Building partnerships with a simple approach:

Listen. Deliver. Improve.

Exult Engineering, PC

304 W Millbrook Rd

Suite F

Raleigh, North Carolina 27609

TEL: (984) 500-5426

EMAIL: cole@exultengineering.com

EMPS: 6

Primary Contact: Coleman Dagerhardt
cole@exultengineering.com

DESCRIPTION/DISCIPLINE:

Exult Engineering was founded with a vision of serving our clients, our communities, and our employees with excellence. Since starting in the Fall of 2017, Exult has grown drastically as we work to support a diverse client base including state DOTs, municipal DOTs, airports, universities, hospitals, and private development. Exult focuses on the confluence of traditional transportation engineering and cutting-edge innovation. Our team provides specialty services in the areas of traffic engineering, roadway design, greenway design, signal design, signal timing, transportation planning, intelligent transportation systems, transportation systems management and operations, transit technology, parking planning, and parking technology.



Falcon Engineering

1210 Trinity Road, Suite 110

Cary, NC 27513

TEL: 919-871-0800

EMAIL: mrobertson@falconengineers.com

EMPS: 27

Primary Contact: Margaret Robertson
mrobertson@falconengineers.com

DESCRIPTION/DISCIPLINE:

Disciplines: Geotechnical Engineering; Environmental Services; Construction Material Testing; Special Inspections; and Laboratory Services

FEI Civil Engineers and Land Surveyors

8518 Triad Dr.

Colfax (Greensboro), NC 27235

TEL: (336) 852-9797

EMAIL: cfleming@FEIConsulting.com

EMPS: 37

Primary Contact: Craig Fleming
cfleming@feiconsulting.com

DESCRIPTION/DISCIPLINE:

Civil, Gen Municipal, Energy Hydrology, Land Surveying (UAS, Bathymetric), Hazardous Waste, Industrial, Water

Finch & Associates

309 N. Boylan Ave

Raleigh, NC 27603

TEL: (919) 833-1212

EMAIL: info@finch-associates.com

EMPS: 7

Primary Contact: Jay Watson
jwatson@finch-associates.com

DESCRIPTION/DISCIPLINE:

Finch & Associates is a small team of experts in our respective fields. We have a rich heritage and long-standing reputation for providing exceptional Landscape Architecture; Civil, Structural, & Geo-Structural Engineering; and surveying services.

Fleming & Associates, PA

1004 Hay Street

Fayetteville, NC 28305

TEL: (910) 433-2825

EMAIL: sfleming@flemingandassociates.com

EMPS: 8

Primary Contact: Stephen Fleming
sfleming@flemingandassociates.com

DESCRIPTION/DISCIPLINE:

DISCIPLINES: Foundations; Buildings; Towers; Stadiums; Tunnels; Seismic; Design; Bridges; Locks/Dams/

Water Control Structures; Airports;
Manufacturing; Heavy Industry

Freese & Nichols, Inc.

1017 Main Campus Drive, Ste. 1200
Raleigh, NC 27606

TEL: (919) 582-5850

EMAIL: mdw@freese.com

EMPS: 43

Primary Contact: Mike Ways
mdw@freese.com

DESCRIPTION/DISCIPLINE:

A2.Basic Research and Studies,A4.
Project Feasibility Studies/Economic/
A5.Water Conservation A6.Expert
Testimony A7.Computer/Software
Technology A10.Value Engineering
B1.Mechanical/Electrical /Plumbing
B9.Sustainability or Carbon Neutrality
C1FOUNDATIONS C3.Towers C7.Bridges
E3.Noise
F1.Graywater Systems
F4.Stormwater Management
F6.Wastewater Collection/Treatment
and Disposal
F8.Erosion Control
G1.Hydraulics, Hydrology
G10.Lock/Dams/Water Control
Structures
G11.Irrigation
G12.[ALL]
G2.Treatment
G3.Watershed Management
G4.Flood Risk Management
G5.Coastal and Eco-System Restoration
G6.Surface and Groundwater Supply
Development
G7.Transmission, Distribution & Storage
G8.Water Use Reduction
G9.Climate Adaptation
H1.Highways
H2.Basic Research and Studies
H3.Public Transit
H4.Airports
H5.Marine/Ports
H6.Intermodal Facilities
H7.[ALL]
I3.Recreational Facilities
I4.Program and Construction
Management
I5.Trenchless Technologies
Civil (Environmental); Civil (General
Municipal); Planning; Water; Other
(Wastewater, Program Management

BRANCHES:

CHARLOTTE
222 S. Caldwell St
Charlotte, NC 28202
Tel: (704) 251-0178

GREENSBORO
717 Green Valley Road, Ste. 200
Greensboro, NC 27408
Tel: (336) 790-6744

WINSTON-SALEM
531 N Liberty St,
Winston-Salem, NC 27101
Tel: (336) 790-6744

Froehling & Robertson

310 Hubert Street
Raleigh, NC 27603

TEL: (919) 828-3441

EMAIL: rravenbark@fandr.com

EMPS: 81

Primary Contact: Dan Schaefer
dschaefer@fandr.com

DESCRIPTION/DISCIPLINE:

DISCIPLINES: Civil (Environmental);
Civil (Geotechnical); Construction
Management; Hazardous Waste;
Hydrogeology; Hydrology Materials
Handling; Planning; Other

BRANCHES:

CHARLOTTE
3300 International Airport Drive,
Suite 600,
Charlotte, NC 28208
Tel: (704) 596-2889

FAYETTEVILLE
327 E Jenkins St.
Fayetteville, NC 28306
Tel: (910) 323-9832
Craig Mintz, Branch Manager,
cmintz@fandr.com



Gannett Fleming, Inc.

1 Glenwood
Suite 900
Raleigh, NC 27603

TEL: (919) 420-7660

EMAIL: tsnow@gfnet.com

EMPS: 132

Primary Contact: Mike Holder
mholder@gfnet.com

DESCRIPTION/DISCIPLINE:

Acoustics, Architecture, Business and
Technology Solutions, Construction
Management/Program Management,
Engineering, Environmental
Management & Remediation,
Geotechnical, Information Technology,
Project Delivery Security & Safety,
Valuation & Rate, Vertical Transportation

Gavel & Dorn Engineering

PO BOX 1791

Denver, NC 28037

TEL: (704) 483-2054

EMAIL: lisa@gaveldorn.com

EMPS: 33

Primary Contact: Lisa Gavel
lisa@gaveldorn.com

DESCRIPTION/DISCIPLINE:

DISCIPLINES: Civil, Gen. Mun., Civil
Geotechnical, Environmental, Structural,
Cons. Mgmt.

GEL Engineering of NC, Inc. DBA GEL Solutions

2700 Sumner Blvd.

Suite 106

Raleigh, NC 27616

TEL: (919) 544-1100

EMAIL: derek.bradner@gel.com

EMPS: 21

Primary Contact: Derek Bradner
Derek.Bradner@gel.com

DESCRIPTION/DISCIPLINE:

We provide subsurface utility
engineering, surveying, and geophysical
services throughout the United States.

Geo Hydro Engineers

2748 Interstate Street

Suite A

Charlotte, NC 28208

TEL: (704) 837-7174

EMAIL: tbaglivo@geohydro.com

EMPS: 35

Primary Contact: Thomas Baglivo, P.E.
tbaglivo@geohydro.com

DESCRIPTION/DISCIPLINE:

Environmental Consulting Services,
Ecological Consulting Services,
Geotechnical Engineering Services,
Construction Material Testing and
Special Inspection

George Barbour + Associates

PO Box 11219

Wilmington, NC 28404

TEL: 910-792-6192

EMAIL: georgebarbour@grbpe.com

EMPS: 1

Primary Contact: Tammy Barbour
tammy@grbpe.com

DESCRIPTION/DISCIPLINE:

DISCIPLINES: Forensic Engineer
Investigations, Litigation support

Geoscience & Technology, PA

2050 Northpoint Drive

Winston-Salem, NC 27106

TEL: (336) 896-1300

EMAIL: geosci@geotec.com

EMPS: 6

Primary Contact: Steve Mason
sem@geotec.com

DESCRIPTION/DISCIPLINE:

Civil (Geotechnical); Civil
(Environmental); Civil (Structural);
Hydrogeology; Hydrology; Hazardous
Waste; Planning, Civil Engineering and
Environmental Consulting

GPI Geospatial, Inc.

Associate (Non Lic.)

508 W 5th Street

Suite 150

Charlotte, NC 28202

TEL: (704) 540-0087

EMAIL: pbadr@gpinet.com

EMPS: 12

Primary Contact: W Brock
abrock@gpinet.com

DESCRIPTION/DISCIPLINE:

GPI Geospatial, Inc. is a trusted provider of precision aerial mapping, imagery, LiDAR, and surveying services within the transportation, planning, design, construction and government agencies. Our mission is to map the foundation for infrastructure improvements that enhance the connectivity between

people and communities. With multiple aircraft and vehicles equipped with high precision imagery and LiDAR sensors, we provide innovative surveying and mapping solutions to state, local and federal governments, as well as private-sector clients throughout the US.

Green Engineering PLLC

PO Box 609

Wilson, NC 27893

TEL: (252) 237-5365

EMAIL: elg3@greeneng.com

EMPS: 21

Primary Contact: Leo Green
elg3@greeneng.com

DESCRIPTION/DISCIPLINE:

Planning, design and construction management work in all types of wastewater treatment and disposal facilities, water treatment and distribution systems, industrial parks, shopping centers, airports, correctional facilities, government installations, county roads and interstate highways. Its pioneering specialization in advanced wastewater technologies, such as water reuse, land application and conjunctive uses, is acknowledged statewide.

Green Mountain Engineering, PLLC

7 A Wendy Court

Greensboro, NC 27409

TEL: (336) 294-9394

EMAIL: vince@greenmountainengineers.com

EMPS: 13

Primary Contact: Vincent Townsend
vince@greenmountainengineers.com

DESCRIPTION/DISCIPLINE:

Civil Engineering and Land Surveying in Greensboro, North Carolina, green mountain engineering, greensboro engineering firm, greensboro surveyor, professional engineer greensboro, civil engineering, land surveying, land development

Grinnell Leadership

Affiliate/Supplier

7011 Eschol Ct

Wilmington, North Carolina 28409

TEL: (919) 619-2921

EMAIL: jgrinnell@teamgrinnell.com

Primary Contact: Kim McFarland
kmcfarland@teamgrinnell.com

DESCRIPTION/DISCIPLINE:

For 34 years we have been in the success business utilizing proven behavioral sciences to help our clients find greater organizational, team and personal leadership potential.

**Hamilton Stephens Steele + Martin, PLLC**

Affiliate/Supplier

525 North Tryon Street

Suite 1400

Charlotte, NC 28202

TEL: (704) 227-1074

EMAIL: achillemi@lawhssm.com

EMPS: 0

Primary Contact: Adrienne Chillemi
achillemi@lawhssm.com

DESCRIPTION/DISCIPLINE:

law firm and attorneys focusing on representation of design professionals

Hardesty & Hanover

3100 Smoketree Court

Suite 1005

Raleigh, NC 27604

TEL: (919) 896-7428

EMAIL: sreynolds@hardestyhanover.com

EMPS: 3

Primary Contact: Scott Reynolds
sreynolds@hardestyhanover.com

DESCRIPTION/DISCIPLINE:

Hardesty & Hanover is a full-service infrastructure engineering firm with more than 130 years of experience steeped in solving complex engineering challenges.

Harrell Design Group, PC

8016 Tower Point Drive

Charlotte, NC 28227

TEL: (704) 814-1320

EMAIL: LHarrell@harrelldg.com

EMPS: 22

Primary Contact: Harrell Design Group

accounting@harrellldg.com

DESCRIPTION/DISCIPLINE:

DISCIPLINES: Architectural; Mechanical;
Electrical; Communications; Plumbing;
Fire Protection; Planning; Other

Hart & Hickman

2923 S. Tyron Street, Ste 100
Charlotte, NC 28203

TEL: 704-586-0007

EMAIL: ccannon@harthickman.com

EMPS: 58

Primary Contact: Matthew
Bramblett
mbramblett@harthickman.com

DESCRIPTION/DISCIPLINE:

DISCIPLINES: Civil (Environmental);
Hydrology

Hazen and Sawyer, PC

4011 Westchase Blvd, Ste. 500
Raleigh, NC 27607

TEL: (919) 833-7152

EMAIL: rltaylor@hazenandsawyer.com

EMPS: 191

Primary Contact: Ronald Taylor
rltaylor@hazenandsawyer.com

DESCRIPTION/DISCIPLINE:

DISCIPLINES: Architectural/Structural;
Civil (Environmental); Civil (General
Municipal); Construction Management;
Electrical; Energy; Hydrogeology;
Hydrology; Mechanical; Planning; Water;
Other

HDR

555 Fayetteville Street, Suite 900
Raleigh, NC 27601

TEL: (919) 232-6600

EMAIL: paul.meehan@hdrinc.com

EMPS: 439

Primary Contact: Paul Meehan
paul.meehan@hdrinc.com

DESCRIPTION/DISCIPLINE:

DISCIPLINES: Acoustical; Architectural/
Structural; Civil (Environmental); Civil
(General Municipal); Civil (Geotechnical);
Civil (Structural); Civil (Transportation)
Cogeneration; Communications;
Computer Applications; Construction
Management; Electrical; Energy;
Hazardous Waste; Hydrogeology;
Hydrology; Industrial; Materials Handling;
Mechanical; Mining; Planning; Water;
Other

Heath and Associates, Inc.

108 W Warren St.

Suite 300

Shelby, NC 28150

TEL: (704) 487-8516

EMAIL: scott@heathweb.com

Primary Contact: Scott Heath
scott@heathweb.com

DESCRIPTION/DISCIPLINE:

Natural Gas engineering and consulting

HensonFoley

121 Gilead Road

Huntersville, NC 28078

TEL: (704) 875-1615

EMAIL: tim@hensonfoley.com

EMPS: 11

Primary Contact: Tim Foley
tim@hensonfoley.com

DESCRIPTION/DISCIPLINE:

Land Planning, Landscape Architectural,
and Civil Engineering firm specializing
in Site Planning and preparation of Site
Construction Documents.

High Country Engineering, PC

111 E Chestnut Street

Asheville, NC 28801

TEL: (828) 230-4511

EMAIL: mgoforth@hcepc.net

EMPS: 4

Primary Contact: Michael Goforth
mgoforth@hcepc.net

DESCRIPTION/DISCIPLINE:

Small civil engineering firm providing
a mix of private development and
municipal engineering work across WNC.

**Highfill Infrastructure
Engineering, P.C.**

2703 Jones Franklin Road, Suite 201

Raleigh, NC 27518

TEL: (919) 481-4342

EMAIL: thighfill@hiepc.com

EMPS: 27

Primary Contact: J Cox
rcox@hiepc.com

DESCRIPTION/DISCIPLINE:

HIGHFILL is a principle-centered
consulting firm helping public and
private utilities and industrial clients
optimize water, wastewater and
stormwater infrastructure solutions.

Our service-focused team members
efficiently lead infrastructure planning,
design, and construction projects with
a proficiency and devotion to customer
service that are second to none.

BRANCHES:

3804 Park Avenue, Unit A, Wilmington,
NC 28403

380 Knollwood Street, Suite 734,
Winston-Salem, NC 27103

1728 Main Street, Suite 205,
Columbia, SC 29201

Hinde Engineering, Inc.

10815 Sikes Place, Suite 210

Charlotte, NC 28227

TEL: (704) 814-4407

EMAIL: khinde@hindeengineering.com

EMPS: 12

Primary Contact: Kevin Hinde
khinde@hindeengineering.com

DESCRIPTION/DISCIPLINE:

HEI was founded in 2004 and is a civil
engineering firm specializing in utility
design and utility coordination and
provides a wide range of consulting
services to both private and public
clients.

HNTB North Carolina, PC

343 E Six Forks Road, Suite 200
Raleigh, NC 27609

TEL: (919) 546-8997

EMAIL: psteinman@hntb.com

EMPS: 90

Primary Contact: Spencer
Franklin
sfranklin@hntb.com

BRANCHES:

121 W. Trade Street, Suite 2050,
Charlotte, NC 28202

Contact: Greg Boulanger

Direct Tel: (704)208-5362

EMAIL: gboulanger@hntb.com

ACEC of North Carolina
advocates for revitalizing
the **INFRASTRUCTURE**
of our state and lobbies
for for stable, long-term
funding solutions.

HRV Conformance Verification Associates, Inc.

Affiliate/Supplier

420 Rouser Road
Suite 400, Building 3
Moon Township, PA 15108

TEL: (412) 299-2000

EMAIL: mbelsky@hrvinc.com

Primary Contact: H. Rochelle Stachel
hrstachel@hrvinc.com

DESCRIPTION/DISCIPLINE:

Leading experts in materials quality assurance and quality control inspection, construction management, and construction inspection. We are Quality. Assured.

Hughes Engineering, PLLC

1500 Sunday Drive, Suite 101
Raleigh, NC 27607

TEL: (919) 897-8900

EMAIL: rhughes@hugheseng.com

EMPS: 15

Primary Contact: Robert Hughes
rhughes@hugheseng.com

DESCRIPTION/DISCIPLINE:

Process Engineering, Project Management; Biotechnology, Upstream Fermentation, Downstream Purification; Oral Solid Dosage; Aseptic Formulation/Filling/Finishing; Packaging; High Purity Systems & Utilities; Equipment selection, specification and management; Project Management of all phases: Concept Scope Development, Detail Design, Construction, Validation; Automation & Controls; Detail Design Specifications and Drawings; Regulatory Audits and Guidance.
Certifications: SBE

Hydrostructures, PA

126 Commerce Court
Pittsboro, NC 27312

TEL: (919) 542-5002

EMAIL: Gina.Moore@hydrostructures.com

EMPS: 52

Primary Contact: Gina Moore
Gina.Moore@hydrostructures.com

DESCRIPTION/DISCIPLINE:

DISCIPLINES: Civil (Environmental); Civil (General Municipal); Computer Applications; Water



ICE of Carolinas PLLC

4505 Falls of Neuse Road
Suite 110

Raleigh, NC 27609

TEL: (984) 255-0410

EMAIL: lynda.monroe@ice-eng.com

EMPS: 14

Primary Contact: Lynda Monroe
lynda.monroe@ice-eng.com

DESCRIPTION/DISCIPLINE:

Civil (General Municipal); Civil (Structural) Civil (Transportation); Construction Management; Hydrology; Surveying

BRANCHES:

790 Cardinal Road, Suite 14
New Bern, NC 28562

Johnny Metcalfe

Tel: (252) -75-3208

5200 Seventy Seven Center Dr.
Suite 100

Charlotte, NC 28217

Jim Cravens

Tel: (704) 705-3575

Insurance Management Consultants, Inc. (IMCI)

Affiliate/Supplier

PO Box 2490

Davidson, NC 28036

TEL: (704) 799-1600

EMAIL: jeff@imcipls.com

Primary Contact: Jeff Todd
jeff@imcipls.com

DESCRIPTION/DISCIPLINE:

Professional Liability, General Insurance, Risk Management Services for design professionals in North Carolina, South Carolina, Virginia, and Tennessee.



Jamestown Engineering Group, Inc.

117 E. Main Street
Jamestown, NC 27282

TEL: (336) 886-5523

EMAIL: dan@jamestownengineering.com

EMPS: 8

Primary Contact: Daniel Pritchett
dan@jamestownengineering.com

DESCRIPTION/DISCIPLINE:

DISCIPLINES: Civil (Environmental); Civil (General Municipal); Hydrology; Planning; Surveying; Water

JC Waller & Associates

7 - L Dundas Circle
Greensboro, NC 27407

TEL: (336) 697-2637

EMAIL: sbittle@jcwaller.com

EMPS: 13

Primary Contact: Sherry Bittle
sbittle@jcwaller.com

DESCRIPTION/DISCIPLINE:

DISCIPLINES: Civil (General Municipal); Surveying; Water, Planning

JDH Structural Engineers, PLLC

19545 Greentree Way
Suite B

Cornelius, NC 28031

TEL: (704) 997-7072

EMAIL: dhernandez@jdhengineers.com

EMPS: 5

Primary Contact: Joseph Hernandez
dhernandez@jdhengineers.com

DESCRIPTION/DISCIPLINE:

Civil, Structural

Johnson Mirmiran & Thompson, Inc.

1130 Situs Court, Ste 200
Raleigh, NC 27606

TEL: (984) 269-4910

EMAIL: bjenkins@jmt.com

EMPS: 19

DESCRIPTION/DISCIPLINE:

DISCIPLINES: Architectural, Civil (Environmental); Civil (General Municipal); Civil (Geo technical) Civil (Structural); Civil (Transportation); Computer Applications, Construction Management; Electrical; Hazardous Waste; Hydrology, Industrial, Mechanical; Planning; Surveying; Water' Natural and Cultural Resources



KCI Associates of NC, PA

4505 Falls of Neuse Road
Suite 400

Raleigh, NC 27609

TEL: (919) 783-9214

EMAIL: liz.phipps@kci.com

EMPS: 186

Primary Contact: Laurie Arensdorf
Laurie.Arensdorf@kci.com

DESCRIPTION/DISCIPLINE:

DISCIPLINES: Civil (Environmental); Civil (General Municipal); Civil (Structural); Civil (Transportation); Communications; Construction Management; Hydrology; Surveying; Resource Management; Water Resources, Water Quality, Water/Wastewater. Power; Subsurface Utility Engineering; Site/Civil; Landscape Architecture; Building Structural.

Kiewit Engineering Group Inc.

10055 Trainstation Circle
Lone Tree, Colorado 80124

TEL: (720) 285-1128

EMAIL: John.Donatelli@kiewit.com

Primary Contact: Steve Struck
Steve.Struck@kiewit.com

DESCRIPTION/DISCIPLINE:

Construction-Focused Engineering. Kiewit engineers are focused on what matters most to you: performance, schedule, safety, total installed and operating costs.

Kimley-Horn and Associates, Inc.

421 Fayetteville Street, Suite 600
Raleigh, NC 27601

TEL: (919) 677-2000

EMAIL: steph.hachem@kimley-horn.com

EMPS: 379

Primary Contact: Steph Hachem
steph.hachem@kimley-horn.com

DESCRIPTION/DISCIPLINE:

Civil (Environmental); Civil (General Municipal); Civil (Structural); Civil (Transportation); Communications; Computer Applications; Hydrology; Planning; Water; Other Studies, Research, and Consulting Engineering Services: Project Feasibility Studies/Economic/; Expert Testimony; Public Outreach/Involvement; Value Engineering. Building/Technology Systems: Mechanical/Electrical /Plumbing; Communications, Software Systems; Efficiency Certification Standards, e. g. LEED; Computer/Technology; Structural Systems: Foundations; Buildings, Towers, Stadiums, Tunnels, Seismic Design, Bridges. Environmental: Noise, Waste Pond Management, Mitigation; Restoration/Reclamation/Remediation; Air Quality Water and Stormwater: Wastewater Collection/Treatment and Disposal; Erosion Control. Water Resources: Hydraulics; Hydrology; Watershed Management; Flood Risk Management' Coastal and Eco-System Restoration' Surface and Groundwater Supply Development; Water Use Reduction; Locks/Dams/Water Control Structures. Transportation: Highways, Basic Research and Studies, Public Transit, Airports, Marine/Ports, Intermodal Facilities. Special Projects: Safety and Security; Land Development; Recreational Facilities; Program and Construction Management; Trenchless Technologies; Subsurface Engineering Total project construction budget does not exceed \$2.5 Million.

Kisinger Campo & Associates Corp

PNC Plaza

301 Fayetteville Street, Suite 1500
Raleigh, NC 27601

TEL: (919) 882-7839

EMAIL: sam.cullum@kisingercampo.com

EMPS: 69

Primary Contact: Paul Foley
pfoley@KCAeng.com

DESCRIPTION/DISCIPLINE:

DISCIPLINES: Civil (Environmental); Civil (Structural); Civil (Transportation); Computer Applications

BRANCHES:

Kannapolis Regional Construction Inspection Office
305 South Main Street
Kannapolis, North Carolina 28081
(704) 932-2122

Raleigh Regional Design and Bridge Inspection Office
PNC Plaza
301 Fayetteville Street
Suite 1500
Raleigh, North Carolina 27601
(919) 882-7839

Winston-Salem Office
615 St. George Square Court
Suite 300
Winston-Salem, North Carolina 27103

Kittelson & Associates, Inc.

272 N. Front St.

Suite 410

Wilmington, NC 28409

TEL: (800) 878-5230

EMAIL: bschroeder@kittelson.com

EMPS: 12

Primary Contact: Bastian Schroeder
bschroeder@kittelson.com

DESCRIPTION/DISCIPLINE:

Kittelson & Associates, Inc., has provided transportation engineering, planning, and research services to government agencies, municipalities, and private organizations since 1985.

BRANCHES:

Kittelson-Raleigh
702 Oberlin Road, Suite 450
Raleigh, NC 27605
919-926-1291
EMPS: 3

Kittelson-Wilmington
272 N Front St, Suite 410
Wilmington, NC 28401
910-399-5570
EMPS: 6

Kittelson-Charlotte
809 West Hill Street, Suite D
Charlotte, NC 28208
980-505-8107

Kleinfelder

9009 Perimeter Woods Drive
Suite E
Charlotte, NC 28216
TEL: (704) 598-1049
EMAIL: AHadsell@kleinfelder.com
EMPS: 106
Primary Contact: Emily Ripka
eripka@nxi.com

DESCRIPTION/DISCIPLINE:

DISCIPLINES: Civil (Environmental); Civil (General Municipal); Civil (Geotechnical); Civil (Structural); Civil (Transportation); Construction Management; Energy; Hazardous Waste; Hydrogeology; Hydrology; Industrial; Materials Handling; Mining; Planning; Water; Other

BRANCHES:

Greensboro
7343 West Friendly Avenue, Suite B,
Greensboro, NC 27410
Tel: 336-668-0093

Morrisville
3200 Gateway Centre Blvd., Ste. 100
Morrisville, NC 27560
Tel: 919-755-5011



LaBella Associates

400 South Tyron Street
Suite 1300
Charlotte, NC 28285
TEL: (877) 626-6606
EMPS: 59
Primary Contact: Patrick Waterman
PWaterman@LaBellaPC.com

LHC Structural Engineers

5430 Wade Park Blvd., Ste. 400
Raleigh, NC 27607
TEL: (919) 832-5587
EMAIL: blasater@lhceengineers.com
EMPS: 28
Primary Contact: Robert Lasater
blasater@lhceengineers.com

DESCRIPTION/DISCIPLINE:

DISCIPLINES: Structural

Lindsay Transportation

Affiliate/Supplier
18135 Burke Street
Omaha, NE 68022
TEL: (402) 206-6014
EMAIL: mark.bedard@lindsay.com
Primary Contact: Mark Bedard
mark.bedard@lindsay.com

DESCRIPTION/DISCIPLINE:

Our flagship product, the Road Zipper System®, provides a real-time movable barrier solution for Construction and Managed Lanes projects

LJB Inc.

1401 Aversboro Road, Suite 215
Garner, NC 27529
TEL: (919) 594-6735
EMAIL: rcanales@LJBinc.com
EMPS: 18
Primary Contact: Roberto Canales
rcanales@LJBinc.com

DESCRIPTION/DISCIPLINE:

Created In 1966, LJB is a company fueled by integrity, quality and service. Today, our diverse and talented staff provides multimodal transportation, highway, bridge, traffic, water resources,

water resources - hydraulics and hydrology, site-civil, building structural engineering, environmental and safety services.

DISCIPLINES: Multimodal transportation, road, bridge, traffic, site-civil, water resources, dam safety and assessments, and building structural engineering, NEPA/SEPA environmental and safety services

LMHT Associates

7208 ACC Blvd.
2nd Floor
Raleigh, NC 27617
TEL: (919) 544-0087
EMAIL: rthornton@lmht.com
EMPS: 27
Primary Contact: Michael Payne
mpayne@lmht.com

DESCRIPTION/DISCIPLINE:

Provides comprehensive design services including Architectural, Plumbing, Mechanical, and Electrical Engineering with many licensed Architects and Engineers on staff. We are capable of working on individual and national corporate multi-site projects in 48 states. This includes renovations, end caps, in-line up-fits, and free standing projects

Lochner

2840 Plaza Place, Ste. 202
Raleigh, NC 27612
TEL: (919) 571-7111
EMAIL: ksmith@hwlochner.com
EMPS: 11
Primary Contact: Kenneth Smith
ksmith@hwlochner.com

DESCRIPTION/DISCIPLINE:

DISCIPLINES: Civil (Environmental); Civil (General Municipal); Civil (Structural); Civil (Transportation); Construction Management; Hydrogeology; Hydrology; Planning; Water; Other

Locklear, Locklear & Jacobs, PLLC

114 W. 3rd Street
P.O. Box 3119
Pembroke, NC 28372
TEL: (910) 774-9306
EMAIL: Jonathanlocklear@llandj.com
EMPS: 6

Primary Contact: Jonathan Locklear
Jonathanlocklear@llandj.com

DESCRIPTION/DISCIPLINE:

DISCIPLINES: Civil and Environmental Engineering; Structural Engineering and Foundation Design; Mechanical/Electrical/Plumbing (MEP) Engineering; Renovations and Retrofitting; Performance Contracting

Lynch Mykins

301 N. West Street
Suite 105
Raleigh, North Carolina 27603
TEL: (919) 782-1833
EMAIL: alynch@lynchmykins.com
EMPS: 13
Primary Contact: Dave Mykins
dmykins@lynchmykins.com

DESCRIPTION/DISCIPLINE:

DISCIPLINES: Architectural/Structural; Civil (Structural)



Maple Engineering, PLLC

708 St. Mary's Street
Raleigh, NC 27605
TEL: (919) 341-4247
EMAIL: admin@maple-eng.com
EMPS: 17
Primary Contact: Lori White
admin@maple-eng.com

DESCRIPTION/DISCIPLINE:

AutoCAD - Drawing Production, REVIT - Building Information Modeling (BIM), Carrier HAPS - HVAC Load Software, Visual - Lighting Modeling Software, E-Quest - Energy Modeling, Adobe PDF - Document Transmitting, Digital Pictures & Video, FTP - Document Receiving & Delivery, Web Based Video Conferencing, LEED Design, Energy Modeling, Site Lighting Design, As-Built Drawings, Construction Administration, Existing Building Audits & Troubleshooting

Mattern & Craig, Inc.

12 Broad Street
Asheville, NC 28801
TEL: (828) 254-2201
EMAIL: jbvoso@matternandcraig.com
EMPS: 16
Primary Contact: James Voso
jbvoso@matternandcraig.com

DESCRIPTION/DISCIPLINE:

DISCIPLINES: Civil (General Municipal); Civil (Structural); Civil (Transportation); Hydrology; Industrial; Planning; Surveying; Water; Wastewater

MBD Consulting Engineers, PA

760-A NW Broad St
PO Box 1215
Southern Pines, NC 28387
TEL: (336) 629-3931
EMAIL: cmcgougan@mbd-eng.com
EMPS: 11
Primary Contact: Joe McGougan
cmcgougan@mbd-eng.com

DESCRIPTION/DISCIPLINE:

DISCIPLINES: Architectural/Structural; Civil (Environmental); Civil (General Municipal); Communications; Materials Handling

MBP Carolinas

4700 Falls of Neuse Rd
Suite 370
Raleigh, NC 27609
TEL: (919) 875-0124
EMAIL: klugo@mbpce.com
EMPS: 17
Primary Contact: Kevin Lugo
klugo@mbpce.com

DESCRIPTION/DISCIPLINE:

DISCIPLINES: Construction Management, Other

McAdams Company

2905 Meridian Parkway
Durham, NC 27713
TEL: (919) 361-5000
EMAIL: mcadams@mcadamsco.com
EMPS: 323
Primary Contact: Iona Thomas
thomas@mcadamsco.com

DESCRIPTION/DISCIPLINE:

Civil (Environmental, General Municipal, Geotechnical, Structural, Transportation)

Energy; Hydrology; Industrial; Planning; Water; Wastewater, Stormwater, Survey/SUE, Landscape Architecture

BRANCHES:

2905 Meridian Parkway, Durham, NC 27713
One Glenwood Avenue, Suite 201, Raleigh, NC 27603
3430 Toringdon Way, Suite 110, Charlotte, NC 28277

McCormick Taylor, Inc.

5400 Trinity Rd, Suite 102
Raleigh, NC 27607
TEL: (919) 233-8965
EMAIL: kmhagner@mccormicktaylor.com
EMPS: 5
Primary Contact: Brian Roberts
btroberts@mccormicktaylor.com

DESCRIPTION/DISCIPLINE:

DISCIPLINES: Civil (Environmental); Civil (Geotechnical); Civil (Transportation); Communications; Hydrology; Planning

McDavid Associates, Inc.

3714 N. Main Street
Farmville, NC 27828
TEL: (252) 753-2139
EMAIL: apc@mcdavid-inc.com
EMPS: 45
Primary Contact: Richard Moore
rbm@mcdavid-inc.com

DESCRIPTION/DISCIPLINE:

DISCIPLINES: Civil (General Municipal); Hydrogeology; Hydrology; Planning; Surveying; Water

McGill Associates, PA

55 Broad Street
Asheville, NC 28801
TEL: (828) 252-0575
EMAIL: andy.lovngood@mcgillassociates.com
EMPS: 140
Primary Contact: Andy Lovingood
andy.lovngood@mcgillassociates.com

DESCRIPTION/DISCIPLINE:

DISCIPLINES: Civil (Environmental); Civil (General Municipal); Construction Management; Electrical; Planning; Surveying; Water; Other

McKim & Creed, Inc.

1730 Varsity Drive, Ste. 500
Raleigh, NC 27606

TEL: (919) 233-8091

EMAIL: mdaves@mckimcreed.com

EMPS: 223

Primary Contact: Street Lee, PE
slee@mckimcreed.com

DESCRIPTION/DISCIPLINE:

DISCIPLINES: Civil (Environmental); Civil (General Municipal); Civil (Structural); Civil (Transportation); Construction Management; Electrical; Energy; Hydrogeology; Hydrology; Mechanical; Planning; Surveying; Water; Other

BRANCHES:

370 North Louisiana Ave., Suite F-3,
Asheville, NC 28806,
828-252-8181,
Contact: Rick Cooper, PE, rcooper@mckimcreed.com

8020 Tower Point Drive, Charlotte, NC 28227,
704-841-2588,
Contact: Don Hamburger, PE,
dhamburger@mckimcreed.com

243 North Front Street, Wilmington, NC 28401,
910-343-1048,
Contact: Marianna Boucher, mboucher@mckimcreed.com

Mead & Hunt

111 E Hargett St Ste 300
Raleigh, NC 27601

TEL: 9197148670

EMAIL: rick.decola@meadhunt.com

EMPS: 13

Primary Contact: Rick DeCola
rick.decola@meadhunt.com

DESCRIPTION/DISCIPLINE:

Studies, Research, and Consulting Engineering Services: Project Feasibility Studies/Economic; Water Conservation; Public Outreach/Involvement. Structural Systems: Bridges. Water and Stormwater: Stormwater Management; Erosion Control. Water Resources: Hydraulics, Hydrology. Transportation: Highways, Airports

Medallion Insurance Services

Affiliate/Supplier

3540 Toringdon Way
Charlotte, NC 28277

TEL: 704-256-6000

EMAIL: joe@medallionpro.com

Primary Contact: Joe Minervini
joe@medallionpro.com

DESCRIPTION/DISCIPLINE:

Medallion Insurance Services provides Professional Liability Insurance to Architects, Engineers, and Surveyors. We are an independent insurance broker and specialize in Professional Liability/E&O Insurance. We also offer customized insurance solutions for General Liability, Workers Compensation, EPLI, Property and other insurance products for clients.

Medlock & Associates Engineering, PA

53 Asheland Ave, Suite 101
Asheville, NC 28801

TEL: (828) 232-4448

EMAIL: croberts@medlockengr.com

EMPS: 12

Primary Contact: Coreen Roberts
croberts@medlockengr.com

DESCRIPTION/DISCIPLINE:

Structural engineering firm

MI Engineering, PLLC

1011 Schaub Drive, Ste. 100
Raleigh, NC 27606

TEL: (919) 851-6606

EMAIL: morrismi@mi-engineers.com

EMPS: 10

Primary Contact: Morris Israelnaim
morrismi@mi-engineers.com

DESCRIPTION/DISCIPLINE:

Architectural/Structural; Civil (General Municipal); Civil (Structural); Civil (Transportation); Construction Management; Hydrogeology; Hydrology; Other

Michael Baker International

8000 Regency Parkway, Ste. 600
Cary, North Carolina 27518

TEL: (919) 463-5488

EMAIL: dhathaway@mbakerintl.com

EMPS: 154

Primary Contact: Dwain Hathaway
Dhathaway@mbakerintl.com

DESCRIPTION/DISCIPLINE:

DISCIPLINES: Civil (Environmental); Civil (General Municipal); Civil (Structural); Civil (Transportation); Computer Applications; Construction Management; Hydrology; Hydrogeology; Industrial; Planning; Surveying; Water; Other

Mid-Atlantic Associates, Inc.

409 Rogers View Court
Raleigh, NC 27610

TEL: (919) 250-9918

EMAIL: dmcclure@maaonline.com

EMPS: 18

Primary Contact: Darin McClure
dmcclure@maaonline.com

DESCRIPTION/DISCIPLINE:

DISCIPLINES: Civil (Environmental); Phase I & II Environmental Assessments, Contaminant Assessment, Hazardous Waste; Brownfields, Remediation, Hydrology

BRANCHES:

1125 East Morehead Street, Suite #104
Charlotte, North Carolina 28204
(980) 585-1271
Greg D. Icenhour
Gicenhour@maaonline.com

Modjeski and Masters, Inc.

333 Fayetteville Street
Suite 500

Raleigh, NC 27601

TEL: 919-831-4765

EMAIL: jrdoughty@modjeski.com

EMPS: 70

Primary Contact: Jason Doughty
jrdoughty@modjeski.com

DESCRIPTION/DISCIPLINE:

Discipline: Transportation

BRANCHES:

100 Sterling Parkway, Suite 302,
Mechanicsburg, PA 17050
717-790-9565 ext. 10521

Moffatt & Nichol

4700 Falls of Neuse, Ste 300
Raleigh, NC 27609

TEL: (919) 781-4626

EMAIL: treid@moffattnichol.com

EMPS: 70

Primary Contact: Timothy Reid
treid@moffattnichol.com

DESCRIPTION/DISCIPLINE:

DISCIPLINES: Civil (Environmental); Civil (General Municipal); Civil (Geotechnical); Civil (Structural); Civil (Transportation); Computer Applications; Construction Management; Electrical; Energy; Hydrology; Industrial; Materials Handling; Mechanical; Planning; Water; Other

Morningstar Law Group

Affiliate/Supplier

421 Fayetteville Street, Suite 530
Raleigh, NC 27601

TEL: (919) 590-0375

EMAIL: ghale@morningstarlawgroup.com

Primary Contact: Grayson Hale
ghale@morningstarlawgroup.com

DESCRIPTION/DISCIPLINE:

Raleigh based full service business and litigation law firm where partner Grayson S. Hale leads its practice in representing engineering and related professional firms in mergers, acquisitions, ownership transition, licensing and other business matters.

Mosher Engineering, Inc.

409-B Rogers View Court
Raleigh, NC 27610

TEL: (919) 856-1550

EMAIL: cwarr@mosherengineering.com

EMPS: 14

Primary Contact: Christina Warr
cwarr@cti-consultants.com

DESCRIPTION/DISCIPLINE:

DISCIPLINES: Civil (Environmental); Civil (Geotechnical); Hydrology; Hydrogeology; Other

Mott MacDonald

7621 Purfoy Road, Ste.115
Suite 115

Fuquay-Varina, NC 27526

TEL: (919) 552-2253

EMAIL: glenda.gibson@mottmac.com

EMPS: 69

Primary Contact: Glenda Gibson
Glenda.Gibson@mottmac.com

DESCRIPTION/DISCIPLINE:

DISCIPLINES: Civil (Environmental); Civil (Structural); Civil (Transportation); Planning; Hydro

BRANCHES:

Branch/Satellite:
1101 Haynes Street,
Suite 101
Raleigh, NC 27604

MS Consultants, Inc.

5444 Wade Park Blvd
Suite 160

Raleigh, NC 27607

TEL: (919) 772-5565

EMAIL: LSamples@msconsultants.com

EMPS: 18

Primary Contact: Walt Gray
wgray@msconsultants.com

DESCRIPTION/DISCIPLINE:

ms is a multidiscipline engineering, architecture, and planning firm for the transportation, environmental, architecture, commercial, retail, sustainability, railroad and construction industries.

DISCIPLINES: Acoustical; Architectural/Structural; Civil (Environmental); Civil (General Municipal); Civil (Structural); Civil (Transportation); Construction Management; Electrical; Energy; Hazardous Waste; Hydrology; Hydrogeology; Industrial; Materials Handling; Mechanical; Planning; Surveying; Water; Other

**Nexsen Pruet**

Affiliate/Supplier

4141 Parklake Avenue, Suite 200
Raleigh, NC 27612

TEL: (919) 755-1800

EMAIL: Dferrell@nexsenpruet.com

Primary Contact: David Ferrell
Dferrell@nexsenpruet.com

DESCRIPTION/DISCIPLINE:

Nexsen Pruet is a multi-discipline law firm with over 190 lawyers in eight offices throughout North and South

Carolina. Our practices include, but are not limited to legislative/regulatory/government relations, banking and finance, construction, corporate, economic development, employment, environmental, IP, litigation, real estate, and tax. We represent businesses and professionals working in virtually every industry.

Noble Structural Group, PLLC

17505 W. Catawba Ave.

Suite 220

Cornelius, NC 28031

TEL: (980) 689-2932

EMAIL: jnoble@noblestructuralgroup.com

EMPS: 5

Primary Contact: John Noble
jnoble@noblestructuralgroup.com

DESCRIPTION/DISCIPLINE:

Disciplines: Civil, Structural

BRANCHES:

LHT and CASE

North State Environmental

2889 Lowery Street
Winston-Salem, NC 27101

TEL: (336) 725-2010

EMAIL: darrell@nsenv.com

EMPS: 51

Primary Contact: Darrell
Westmoreland
darrell@nsenv.com

NOVA Engineering & Environmental, Inc.

5504 Commercial Avenue, Suite 102
Raleigh, NC 27612

TEL: (984) 242-1950

EMAIL: mbahi@usanova.com

EMPS: 19

Primary Contact: Thomas Bartlett
tbartlett@usanova.com

DESCRIPTION/DISCIPLINE:

Nova provides engineering consulting services, geotechnical and environmental engineering, construction support and materials testing services

NV5

P.O. Box 33127

Raleigh, NC 27636

TEL: (919) 836-4800

EMAIL: Jill.Heath@nv5.com

EMPS: 180

Primary Contact: Jill Heath
Jill.Heath@nv5.com

DESCRIPTION/DISCIPLINE:

DISCIPLINES: Civil (Environmental); Civil (General Municipal); Civil (Structural); Civil (Transportation); Civil (Traffic); Construction Management; Hydrology; Planning; Surveying; Water; Sub-Surface Utility Engineering; AV and Acoustics



O. R. Colan Associates

Affiliate/Supplier

7005 Shannon Willow Road, Suite 100
Charlotte, NC 28226

TEL: (704) 944-1394

EMAIL: mstarling@orcolan.com

Primary Contact: Matthew Starling
mstarling@orcolan.com

DESCRIPTION/DISCIPLINE:

Founded in 1969, O.R. Colan Associates (ORC) is the nation's oldest firm specializing exclusively in land acquisition, relocation, and program management for public works projects. DESCRIPTION: Land acquisition, residential & commercial relocation, property management, appraisal, training to public & private agencies, and program management for public work projects.

Orsborn Engineering Group, PA

605 Lexington Ave, Suite 301
Charlotte, NC 28203

TEL: 7047491432

EMAIL: aorsborn@orsborn-eng.com

EMPS: 14

Primary Contact: Amanda Orsborn
aorsborn@orsborn-eng.com

DESCRIPTION/DISCIPLINE:

civil engineering design, landscape architect, design and project management



Pabst Design Group

107 Fayetteville St.

Suite 200

Raleigh, NC 27601

TEL: (919) 848-4399

EMAIL: dpabst@pabstdesign.com

EMPS: 8

Primary Contact: Phillip (Dan) Pabst
dpabst@pabstdesign.com

DESCRIPTION/DISCIPLINE:

DISCIPLINES: Civil (General Municipal); Construction Management; SurveyingSite/Civil, Land Development, Landscape Architecture, Planning

Parrish and Partners

1801 Stanley Road, Ste. 104

Greensboro, NC 27407

TEL: (336) 944-6880

EMAIL: Jkirby@parrishandpartners.com

EMPS: 9

Primary Contact: Jeff Kirby
Jkirby@parrishandpartners.com

DESCRIPTION/DISCIPLINE:

Civil (Environmental); Civil (Transportation); Construction Management; Planning

Parsons

5540 Centerview Drive, Ste. 217

Raleigh, NC 27606

TEL: (919) 854-1370

EMAIL: ed.robbs@parsons.com

EMPS: 10

Primary Contact: Ed Robbins
ed.robbs@parsons.com

DESCRIPTION/DISCIPLINE:

DISCIPLINES: Civil (Environmental); Civil (General Municipal); Civil (Structural); Civil (Transportation); Planning

Pennoni

5430 Wade Park Blvd

Suite 106

Raleigh, NC 27607

TEL: (919) 230-9204

EMAIL: akimball@pennoni.com

EMPS: 14

Primary Contact: April Holloway
aholloway@pennoni.com

DESCRIPTION/DISCIPLINE:

Consulting Engineering Firm

Perigon International

931 Industrial Drive

Matthews, NC 28105

TEL: (704) 246-2000

EMAIL: lillian.mcrae@perigoneng.com

EMPS: 26

Primary Contact: Lillian Mcrae
lillian.mcrae@perigoneng.com

DESCRIPTION/DISCIPLINE:

Civil (Structural), Communications, Construction Management, Industrial, Materials Handling, Mechanical, Planning, Other

PHC Engineering PLLC

8511 Norcross Road

Colfax, NC 27235

TEL: (336) 992-1355

EMAIL: jfarber@piedmonthoist.com

EMPS: 62

Primary Contact: Rich Burns
rburns@piedmonthoist.com

DESCRIPTION/DISCIPLINE:

Piedmont Hoist & Crane manufactures overhead cranes and crane components in Colfax, NC.

Piedmont Design Associates, PA

125 East Plaza Drive, Ste. 101

Mooreville, NC 28115

TEL: (704) 664-7888

EMAIL: dmunday@pdapa.com

EMPS: 8

Primary Contact: Donald Munday
dmunday@pdapa.com

DESCRIPTION/DISCIPLINE:

DISCIPLINES: Civil (General Municipal); Planning; Surveying

Progressive Design Collaborative, Ltd.

3101 Poplarwood Ct, Suite 320

Raleigh, NC 27604

TEL: (919) 790-9989

EMAIL: scampbell@pdcengineers.com

EMPS: 14

Primary Contact: Steve Campbell
scampbell@pdcengineers.com

DESCRIPTION/DISCIPLINE:

Studies, Research, and Consulting Engineering Services: New Products, Materials and Technologies; Basic Research and Studies; Technical Papers; Project Feasibility Studies/Economic; Water Conservation; Expert Testimony; Computer/Software Technology; Public Outreach/Involvement; Security Plans; Value Engineering. Building/Technology Systems: Mechanical/Electrical / Plumbing; Communications; Software Systems; Efficiency Certification Standards, e.g. LEED; Secure Facilities (Military, Research, Correctional); Computer/Technology; Computer/Software Technology; Acoustics; Sustainability or Carbon Neutrality; Energy Efficiency - New and Retrofit. Special Projects: Recreational Facilities.

Pyramid Environmental & Engineering, PC

503 Industrial Ave
Greensboro, NC 27406

TEL: (336) 335-3174

EMAIL: doug@pyramidenvironmental.com

EMPS: 15

Primary Contact: Doug Canavella
doug@pyramidenvironmental.com

DESCRIPTION/DISCIPLINE:

Hazardous Waste; Restoration/Reclamation/Remediation; Air Quality; Stormwater Management; Hydraulics, Hydrology Subsurface Engineering; geophysical surveys and utility locating.

**Ragsdale Liggett PLLC**

Affiliate/Supplier

2840 Plaza Place, Ste. 400
Raleigh, NC 27612

TEL: (919) 787-5200

EMAIL: jnunnally@rl-law.com

Primary Contact: John Nunnally
jnunnally@rl-law.com

DESCRIPTION/DISCIPLINE:

Ragsdale Liggett provides legal services for Engineering Firms

Ramey Kemp Associates, Inc.

5808 Faringdon Place, Ste. 100
Raleigh, NC 27609

TEL: (919) 872-5115

EMAIL: sgroene@rameykemp.com

EMPS: 70

Primary Contact: Stephen Greene
sgroene@rameykemp.com

DESCRIPTION/DISCIPLINE:

DISCIPLINES: Civil (Environmental); Civil (General Municipal); Civil (Transportation); Construction Management; Planning. Transportation Consulting Services

Reece, Noland & McElrath, Inc.

390 Main St.
Canton, NC 28716

TEL: (828) 492-0677

EMAIL: skaufman@rnm-engineers.com

EMPS: 15

Primary Contact: Scott Denton
sdenton@rnm-engineers.com

DESCRIPTION/DISCIPLINE:

Studies, Research, and Consulting Engineering Services: Project Feasibility Studies/Economic, Value Engineering. Building/Technology Systems: Mechanical/Electrical /Plumbing. Efficiency Certification Standards, e.g. LEED, Energy Efficiency - New and Retrofit. Water Resources: Water Use Reduction. Energy: Renewable Energy, Energy Usage Reduction Programs.

Industrial and Manufacturing Processes and Facilities: Biotech, Manufacturing.

REI Engineers, Inc.

9121 Anson Way, Ste 100
Raleigh, NC 27615

TEL: (919) 845-1450

EMAIL: shinesley@reiengineers.com

EMPS: 50

Primary Contact: Scott Hinesley
shinesley@reiengineers.com

DESCRIPTION/DISCIPLINE:

DISCIPLINES: Other (Building envelopes)

BRANCHES:

1927 JN Pease Place, Suite 201,
Charlotte, NC 28262
(704) 596-0331

David Honeycutt, dhoneycutt@reiengineers.com

Rice LLC - Planning & Environmental Services

Associate (Non Lic.)

107 Craven Hill Court
Cary, NC 27518

TEL: (919) 539-0713

EMAIL: brice@rice-usa.com

EMPS: 2

Primary Contact: William Rice II, AICP
brice@rice-usa.com

DESCRIPTION/DISCIPLINE:

Rice LLC is an SPSF planning and environmental firm with nearly 30 years experience providing NEPA and SEPA Environmental Impacts Analysis (CE/EA/EIS), public involvement and Phase I services.

Richard Grubb & Associates (RGA), Incorporated (RGA, Incorporated)

Associate (Non Lic.)

525 Wait Avenue
Wake Forest, NC 27587

TEL: (919) 219-1489

EMAIL: eturco@rgaincorporated.com

EMPS: 4

Primary Contact: Ellen Turco
eturco@rgaincorporated.com

DESCRIPTION/DISCIPLINE:

RGA, Inc. is a full-service cultural resource management firm with a staff of professional historians,

ACEC of North Carolina
advocates for **ECONOMIC
DEVELOPMENT** in every
county of our state and
lobbies for the competitive
programs to grow jobs
and the economy.

archaeologists, architectural historians, material culture specialists, and GIS experts.

Rinker Design Associates, PC

11100 Endeavor Court
Suite 200
Manassas, VA 20109

TEL: (703) 368-7373

EMAIL: dfischer@rdacivil.com

EMPS: 2

Primary Contact: Darell Fischer
dfischer@rdacivil.com

DESCRIPTION/DISCIPLINE:

RDA is a leading provider of professional transportation engineering services on design-bid-build and design-build projects. We specialize in roadway, structures, drainage, and utility design/coordination

Rivers & Associates, Inc.

107 E. 2nd Street
Greenville, NC 27858

TEL: (252) 752-4135

EMAIL: gchurchill@riversandassociates.com

EMPS: 36

Primary Contact: Donnie Brewer
dbrewer@riversandassociates.com

DESCRIPTION/DISCIPLINE:

Civil (Environmental); Civil (General Municipal); Civil (Transportation); Construction Management; Hydrology; Planning; Surveying; Water

RS&H Architects-Engineers-Planners, Inc.

1520 South Blvd
Suite 200
Charlotte, NC 28203

TEL: (704) 752-0610

EMAIL: chad.critcher@rsandh.com

EMPS: 90

Primary Contact: Jennifer Farino
jennifer.farino@rsandh.com

DESCRIPTION/DISCIPLINE:

DISCIPLINES: Civil (General Municipal); Civil (Transportation)

Rummel Klepper & Kahl, LLP

8601 Six Forks Rd., Forum 1
Suite 700
Raleigh, NC 27615

TEL: (919) 878-9560

EMAIL: kskinner@rkk.com

EMPS: 350

Primary Contact: Keith Skinner
kskinner@rkk.com

DESCRIPTION/DISCIPLINE:

DISCIPLINES: Acoustical; Civil (Environmental); Civil (General Municipal); Civil (Structural); Civil (Transportation); Construction Management; Energy; Hydrology; Planning; Water; Other



S&ME, Inc.

9751 Southern Pine Blvd.
Charlotte, NC 28273

TEL: (704) 523-4726

EMAIL: bmclester@smeinc.com

EMPS: 357

Primary Contact: Brian Glidewell
bglidewell@smeinc.com

DESCRIPTION/DISCIPLINE:

DISCIPLINES: Civil (Environmental); Civil (General Municipal); Civil (Geotechnical); Civil (Transportation); Hazardous Waste; Hydrogeology; Hydrology; Industrial; Materials Handling; Planning; Water; Other

Saber Engineering, PA

2923 S. Tryon Street
Suite 280

Charlotte, NC 28203

TEL: (704) 373-0068

EMAIL: JAT@saberengineering.com

EMPS: 11

Primary Contact: James Tribble
JAT@saberengineering.com

DESCRIPTION/DISCIPLINE:

DISCIPLINES: Electrical, Mechanical & Plumbing

Safran Law Offices

Affiliate/Supplier

120 S. Boylan Ave.
Raleigh, NC 27603

TEL: (919) 828-1396

EMAIL: psafra@safranlaw.com

Primary Contact: Perry Safran
psafra@safranlaw.com

DESCRIPTION/DISCIPLINE:

A law firm offering legal counsel for the design build construction industry.

Salas O'Brien

1620 Midtown Place
Raleigh, NC 27609

TEL: (919) 832-8118

EMAIL: bill.smith@salasobrien.com

EMPS: 28

Primary Contact: Bill Smith

bill.smith@salasobrien.com

DESCRIPTION/DISCIPLINE:

DISCIPLINES: Mechanical; Electrical

SAM LLC

2641-116 Sumner Boulevard
Raleigh, NC 27616

TEL: (919) 878-7466

EMAIL: keith.garry@sam.biz

EMPS: 40

Primary Contact: Keith Garry
kgarry@sam.biz

DESCRIPTION/DISCIPLINE:

Providing full service Subsurface Utility Engineering, Utility Coordination, Land Surveying, Mobile & Airborne LiDAR, Photogrammetry and Construction Phase services.

DISCIPLINES: Civil (Environmental, General Municipal, Structural, Transportation); Construction Management; Planning

Schnabel Engineering South, P.C.

11 A Oak Branch Drive
Greensboro, NC 27407

TEL: (336) 274-9456

EMAIL: tfitzgerald@schnabel-eng.com

EMPS: 44

Primary Contact: Thomas Fitzgerald
tfitzgerald@schnabel-eng.com

DESCRIPTION/DISCIPLINE:

DISCIPLINES: Civil (Environmental); Civil (Geotechnical); Civil (General Municipal); Civil (Structural); Construction Management; Hydrogeology; Hydrology; Water; Risk Analysis

SEPI, Inc.

1 Glenwood Avenue
Suite 600
Raleigh, NC 27603

TEL: (919) 789-9977

EMAIL: sthomas@sepiengineering.com

EMPS: 166

Primary Contact: Steven Thomas

sthomas@sepiinc.com

DESCRIPTION/DISCIPLINE:

DISCIPLINES: Civil (Environmental); Civil (General Municipal); Civil (Transportation); Construction Management; Energy; Hazardous Waste; Hydrogeology; Hydrology; Planning; Surveying; Water; Subsurface utility exploration; UAV

SKA Consulting Engineers, Inc.

7900 Triad Center Drive
Suite 200
Greensboro, NC 27409

TEL: (336) 855-0993

EMAIL: sprobinson@skaeng.com

EMPS: 97

Primary Contact: Stephen Robinson

sprobinson@skaeng.com

DESCRIPTION/DISCIPLINE:

DISCIPLINES: Civil (Structural); Electrical; Industrial; Mechanical

Soil & Environmental Consultants, PA

8412 Falls of Neuse Road
Suite 104
Raleigh, NC 27615

TEL: (919) 846-5900

EMAIL: psmith@sandec.com

EMPS: 18

Primary Contact: Patrick Smith

psmith@sandec.com

DESCRIPTION/DISCIPLINE:

S&EC, is a multi-disciplinary engineering and environmental consulting firm that has advanced the concept of providing a total package of consulting services to public and private clients.

Sole Source Engineering PC

207 East Main Street
Gibsonville, NC 27249

TEL: (336) 446-6911

EMAIL: jpeacock@triad.rr.com

EMPS: 2

Primary Contact: Jimmy Peacock

jpeacock@triad.rr.com

DESCRIPTION/DISCIPLINE:

Engineering Services

Stambaugh Ness

Affiliate/Supplier

1005 Broad St.

Suite 302

Augusta, GA 30901

TEL: (800) 745-8233

EMAIL: mtoole@stambaughness.com

Primary Contact: Mindy Toole

mtoole@stambaughness.com

DESCRIPTION/DISCIPLINE:

Certified Public Accountant firm focusing on A/E/C firms nationwide

Stantec

801 Jones Franklin Rd
Suite 300

Raleigh, North Carolina 27606

TEL: (919) 851-6866

EMAIL: tim.jenkins@stantec.com

EMPS: 150

Primary Contact: christa greene

christa.greene@stantec.com

DESCRIPTION/DISCIPLINE:

DISCIPLINES: Architectural/Structural; Civil (Environmental); Civil (General Municipal); Civil (Geotechnical); Civil (Structural); Civil (Transportation); Cogeneration; Communications; Electrical; Energy; Hydrogeology; Hydrology; Industrial; Mechanical; Planning; Surveying; Water

Stewart

223 S. West St
Suite 1100

Raleigh, NC 27603

TEL: (919) 380-8750

EMAIL: dtaylor@stewartinc.com

EMPS: 210

Primary Contact: Doug Taylor

dtaylor@stewartinc.com

DESCRIPTION/DISCIPLINE:

Project Feasibility Studies/Economic/ Water Conservation; Expert Testimony; Computer/Software Technology; Public Outreach/Involvement; Foundations; Buildings; Stadiums; Tunnels; Bridges; Geometrics, ALTA, Land Title and Rights

DISCIPLINES: Surveys; Control, GPS, Monitoring or Construction Surveying; Surveying Mapping, GIS/ LIS Photogrammetry; Noise; Waste Pond Management; Stormwater Management; Wastewater Collection/ Treatment and Disposal; Erosion Control; Hydraulics, Hydrology; Highways; Intermodal Facilities; Land Development; Recreational Facilities; Program and Construction Management; Subsurface Engineering

BRANCHES:

Raleigh

223 S. West Street, Suite 1100

Raleigh, NC 27603

919-380-8750 Phone

919-380-8752 Fax

Raleigh Geotech/CMT Lab 5400 Old Poole Road Raleigh, NC 27610

919-380-8750 Phone

919-380-8752 Fax

Raleigh Geomatics 5410 Old Poole Road Raleigh, NC 27610

919-380-8750 Phone

919-380-8752 Fax

Charlotte

101 N. Tryon St., Suite 1400

Charlotte, NC 28202

704-334-7925 Phone

704-334-7926 Fax

Charlotte Geotech/CMT Lab 9801-E

Southern Pine Blvd Charlotte, NC 28273

704-334-7925 Phone

704-334-7926 Fax

Durham

101 West Main St. Durham, NC 27701

919-380-8750 Phone

Stoltzfus Engineering, Inc.

683 Gralin Street

Kernersville, NC 27284

TEL: (336) 904-0207

EMAIL: info@seiengineering.com

EMPS: 7

Primary Contact: Aden Stoltzfus

aden@seiengineering.com

DESCRIPTION/DISCIPLINE:

Civil Engineering Consultants

STV Engineers, Inc.

900 West Trade St, Suite 715

Charlotte, NC 28202

TEL: (704) 372-1885

EMAIL: stuart.matthis@stvinc.com

EMPS: 111

Primary Contact: Stuart Matthis

stuart.matthis@stvinc.com

DESCRIPTION/DISCIPLINE:

Architectural/Structural; Civil (Environmental); Civil (General Municipal); Civil (Geotechnical); Civil (Structural); Civil (Transportation); Computer Applications; Construction Management; Hydrogeology; Hydrology; Materials Handling; Planning; Energy; Water; Other

BRANCHES:

MORRISVILLE

1600 Perimeter Park Drive, Suite 225

Morrisville, NC

27560

(919) 238-6674

Summer Consultants

4325 Lake Boone Trail

Suite 301

Raleigh, NC 27607

TEL: (984) 204-4500

EMAIL: pointer@summerconsultants.com

EMPS: 5

Primary Contact: Robert Pointer

pointer@summerconsultants.com

DESCRIPTION/DISCIPLINE:

Building and Technology Systems

Summit Design and Engineering Services, PLLC

320 Executive Court

Hillsborough, NC 27278

TEL: (919) 732-3883

EMAIL: james.parker@summitde.net

EMPS: 283

Primary Contact: James Parker

james.parker@summitde.com

DESCRIPTION/DISCIPLINE:

DISCIPLINES: Architectural/Structural; Civil (General Municipal); Civil (Transportation); Construction Management; Hydrology; Materials Handling; Planning; Surveying; Water

Sungate Design Group, P.A.

905 Jones Franklin Road

Raleigh, NC 27606

TEL: (919) 859-2243

EMAIL: jdalton@sungatedesign.com

EMPS: 11

Primary Contact: Joshua Dalton

jdalton@sungatedesign.com

DESCRIPTION/DISCIPLINE:

Studies, Research, and Consulting Engineering Services: Project Feasibility Studies/Economic; Water Conservation; Expert Testimony; Value Engineering. Surveying and Mapping Technology: Control, GPS, Monitoring or Construction Surveying. Environmental: Mitigation, Restoration/Reclamation/Remediation; Water Resources; Transportation: Highway, Public Transit. Land Development, Recreational Facilities. Small Projects <\$2.5Million

SWCA Environmental Consulting and Engineering, Inc.

Associate (Non Lic.)

201 Chatham Street, #3

Sanford, NC 27330

TEL: (919) 630-4099

EMAIL: chad.evenhouse@swca.com

EMPS: 8

Primary Contact: Mark Mickley

Mark.Mickley@swca.com

DESCRIPTION/DISCIPLINE:

Our 100% employee-owned firm offers comprehensive environmental planning, regulatory compliance, and natural and cultural resources management consulting services.

SynTerra

511 Keisler Drive, Suite 102

Cary, NC 27518

TEL: (919) 858-9898

EMAIL: jfowler@synterracorp.com

EMPS: 40

Primary Contact: Josh Fowler

jfowler@synterracorp.com

DESCRIPTION/DISCIPLINE:

SynTerra is a professional services firm focused on environmental assessment & remediation, EHS Compliance, brownfields redevelopment, and Industrial Hygiene



T.Y. Lin International

5285 Shawnee Road

Suite 210

Alexandria, VA 22312

TEL: (415) 291-3700

EMAIL: james.gregg@tylin.com

EMPS: 6

Primary Contact: James Gregg

james.gregg@tylin.com

DESCRIPTION/DISCIPLINE:

T.Y. Lin International (TYLI) is a full-service, professional engineering firm focused on the planning, design, and construction of infrastructure solutions for public and private clients worldwide.

T2

Associate (Non Lic.)

6611 Bay Circe

Ste 220

Norcross, GA 30071

TEL: (678) 421-0080

EMAIL: tony.dimarino@t2ue.com

EMPS: 1

Primary Contact: Tony DiMarino

tony.dimarino@t2ue.com

DESCRIPTION/DISCIPLINE:

T2 UES, Inc. provides a full range of professional engineering (SUE) advance geophysics, surveying and utility coordination to support infrastructure projects in the United States and Canada.

TAE, Inc.

4917 Professional Court, Ste. 105

Raleigh, NC 27609

TEL: (919) 871-0744

EMAIL: mike.talley@taeinc.net

EMPS: 8

Primary Contact: Michael Talley

mike.talley@taeinc.net

DESCRIPTION/DISCIPLINE:

Architectural/Structural; Communications; Industrial; Materials Handling; Other

Taylor, Wiseman & Taylor

2043 Energy Dr.

Apex, NC 27502

TEL: (919) 297-0085

EMAIL: rash@taylorwiseman.com

EMPS: 35

Primary Contact: Fred Rash

rash@taylorwiseman.com

DESCRIPTION/DISCIPLINE:

Civil (Environmental); Civil
(Transportation); Surveying

Teeter Engineering Group, PA

3400-D South Tryon

Charlotte, NC 28217

TEL: (704) 376-2999

EMAIL: bethc@tegpa.com

EMPS: 13

Primary Contact: Beth Casey

Bethc@tegpa.com

DESCRIPTION/DISCIPLINE:

Electrical; Energy; Mechanical; Water

TELICS

Associate (Non Lic.)

2540 Mill Street

Winterville, NC 28590

TEL: (704) 575-7011

EMAIL: stevenichols0396@gmail.com

EMPS: 25

Primary Contact: Steve Nichols

stevenichols0396@gmail.com

DESCRIPTION/DISCIPLINE:

Right of Way Services

Terracon Consultants, Inc.

2401 Brentwood Road, Ste. 107

Raleigh, NC 27604

TEL: (919) 873-2211

EMAIL: aaron.layne@terracon.com

EMPS: 141

Primary Contact: Aaron Layne

aclayne@terracon.com

DESCRIPTION/DISCIPLINE:

Studies, Research, and Consulting
Engineering Services: Expert Testimony,
Value Engineering. Building/Technology
Systems: Efficiency Certification
Standards, e. g. LEED; Energy Efficiency
- New and Retrofit. Structural Systems:
Foundations, Buildings, Towers,
Stadiums, Tunnels, Seismic Design,
Bridges. Environmental: Hazardous

Waste, Noise, Mitigation, Restoration/
Reclamation/Remediation, Air Quality.
Water and Stormwater: Erosion Control;
Water Resources: Hydraulics, Hydrology,
Treatment; Locks/Dams/Water Control
Structures. Transportation: Highways,
Basic Research and Studies, Public
Transit, Airports, Marine/Ports,
Intermodal Facilities.

BRANCHES:

Raleigh

Aaron Layne

Aaron.layne@terracon.com

Charlotte

Mike Schrum

mike.schrum@terracon.com

Greensboro - facilities

Jim Hoskins

jim.hoskins@terracon.com

Greensboro - testing

Jim Hoskins

jim.hoskins@terracon.com

Greenville

Carl Bonner

carl.bonner@terracon.com

TGS Engineers

706 Hillsborough Street

Suite 200

Raleigh, NC 27603

TEL: (919) 773-8887

EMAIL: nclemons@tgsengineers.com

EMPS: 103

Primary Contact: Allen Raynor

araynor@tgsengineers.com

DESCRIPTION/DISCIPLINE:

Civil (General Municipal); Civil
(Structural); Civil (Transportation);
Construction Management; Hydrology;
Planning; Surveying; Water; Row; Utility;
Traffic Management, Other

THC Inc.

Affiliate/Supplier

8514 McAlpine Park Drive,

Suite 295

Charlotte, NC 28211

TEL: (980) 219-8575

EMAIL: nburleson@thcinc.net

EMPS: 50

Primary Contact: Neil Burleson

nburleson@thcinc.net

DESCRIPTION/DISCIPLINE:

THC, Inc. is a NCDOT prequalified
program management firm providing
right of way land acquisition and
relocation services to deliver a win-win
outcome for both the property owner
and client; Right of Way Land Acquisition
and Relocation Services; Noise
Mitigation

Theorem Geo Associates Engineering, PLLC

120 Greenwich Rd

Suite D

Charlotte, NC 28211

TEL: (704) 325-2855

EMAIL: salestgae@theoremgeo.com

EMPS: 2

Primary Contact: Brian Couture

bcouture@theoremgeo.com

DESCRIPTION/DISCIPLINE:

Disciplines: Energy, Studies, Research,
and Consulting Engineering Services,
and Surveying and mapping

Thigpen Engineering & Consulting, PLLC

3612 Griffice Mill Road

Raleigh, NC 27610

TEL: (704) 223-0682

EMAIL: mthigpen@thigpenengineering.
com

EMPS: 1

Primary Contact: Matthew Thigpen

mthigpen@thigpenengineering.com

DESCRIPTION/DISCIPLINE:

Certified Small Professional Services
Firm offering transportation design
services in Work Zone Traffic Control
plan preparation, Pavement Marking
Design, Signing Design, and Signal
Design.

Thinc Strategy, Inc.

Affiliate/Supplier

4208 Six Forks Rd

Suite 1000

Raleigh, North Carolina 27609

TEL: (252) 725-0547

EMAIL: cindy.anderson@thincstrategy.
com

Primary Contact: Kelli Kiger
kelli.kiger@thincstrategy.com

DESCRIPTION/DISCIPLINE:

Ownership Transition, Strategy & Consulting, Management Development

Thompson Engineering Inc.

555 Fayetteville Street Suite 201
Raleigh, NC 27601

TEL: (919) 719-3490

EMPS: 1

DESCRIPTION/DISCIPLINE:

Thompson Engineering was established in 1953 in Mobile, Alabama. Since then, the company has grown throughout the Southeast States providing Transportation Infrastructure and many other services.

Three Oaks Engineering

324 Blackwell Street, Suite 1200
Durham, NC 27701

TEL: (919) 732-1300

EMAIL: suzanne.young@threeoaksengineering.com

EMPS: 27

Primary Contact: Suzanne Unger
Young
suzanne.young@threeoaksengineering.com

DESCRIPTION/DISCIPLINE:

Civil (Environmental); Civil (Transportation); Hydrology; Planning, Traffic

Traffic Planning and Design, Inc.

80 Charlotte Street
Suite 40
Asheville, NC 28801

TEL: (828) 575-0133

EMAIL: cstaudt@trafficpd.com

EMPS: 5

Primary Contact: Christy Staudt
cstaudt@trafficpd.com

DESCRIPTION/DISCIPLINE:

TPD is a transportation engineering firm serving the eastern US. We provide sustainable engineering solutions for our clients and teaming partners.

TRC Engineers

5540 Centerview Drive

Raleigh, North Carolina 27606

TEL: (919) 828-3150

EMAIL: rboyd@trccompanies.com

EMPS: 5

Primary Contact: Richard Boyd
rboyd@trccompanies.com

DESCRIPTION/DISCIPLINE:

Civil (Environmental); Civil (General Municipal); Civil (Geotechnical); Civil (Structural); Civil (Transportation); Construction Management; Materials Handling

Trimat Materials Testing

Associate (Non Lic.)

1 Triangle Drive, Ste. 200
Durham, North Carolina 27709

TEL: (919) 532-2211

EMAIL: cbacchi@trimattesting.com

EMPS: 15

Primary Contact: Christopher Bacchi
cbacchi@trimattesting.com

DESCRIPTION/DISCIPLINE:

Construction materials testing and inspection, CEI, lab services, consultation

Tyndall Engineering & Design, PA

250 Shipwash Drive, Suite 104
Garner, NC 27529

TEL: (919) 773-1200

EMAIL: tyndall@tyndallengineering.com

EMPS: 16

Primary Contact: Prentice Tyndall
ptyndall2@tyndallengineering.com

DESCRIPTION/DISCIPLINE:

Architectural/Structural; Other



UMA Geotechnical Construction

8815 Neville Road
Colfax, NC 27235

TEL: (336) 992-0746

EMAIL: sbyrd@team-uma.com

EMPS: 51

Primary Contact: Maxine Blades
mblades@team-uma.com

DESCRIPTION/DISCIPLINE:

Chemical Grouting ; Concrete Lifting; Soil Stabilization; Infrastructure Repair; Compaction Grouting; Concrete Slab Leveling; Lightweight Fills; Micropiles; Helical Piers; Underpinning Services; Limited Access Drilling; Soil Nailing; Mechanical Anchors; Rock Anchors; Slope Stabilization; Geotechnical Engineering

United Consulting Group, Ltd. (dba United Consulting)

625 Holcomb Bridge Rd.
Norcross, Georgia 30071

TEL: (770) 209-0029

EMAIL: jkelava@unitedconsulting.com

EMPS: 1

Primary Contact: Mahalingam
Bahiradhan
mbahiradhan@unitedconsulting.com

DESCRIPTION/DISCIPLINE:

United Consulting is an engineering consulting firm based in GA specializing in environmental and geophysical services, geotechnical engineering, special inspections, and CMT.

Urban Design Partners PLLC

1213 West Moreland St,
Suite 450
Charlotte, NC 28208

TEL: (704) 334-3303

EMAIL: brian@urbandesignpartners.com

EMPS: 31

Primary Contact: Brian Smith
brian@urbandesignpartners.com

DESCRIPTION/DISCIPLINE:

Other, Civil (Land Development)

Utility Coordination Consultants, LLC

Associate (Non Lic.)

137 Indian Trail Rd
Indian Trail, , NC 28079

TEL: (704) 844-9093

EMAIL: mprice@utilitycoor.com

EMPS: 6

Primary Contact: Mark Price
mprice@utilitycoor.com

DESCRIPTION/DISCIPLINE:

Coordinates the relocations of utilities that are in conflict with new roadway construction.

Utility Engineering LLC

2308 Wakefield Plantation Drive
Raleigh, NC 27614

TEL: (919) 818-5338

EMAIL: dtaylor@utilityengineering.com

EMPS: 11

Primary Contact: David Taylor
dtaylor@utilityengineering.com

DESCRIPTION/DISCIPLINE:

Transmission and Distribution, Substation Design Commission and Testing, System Planning, Financial Services, Regulatory and Litigation, Grid Modernization, Distributed Energy resource and interconnection, Energy Storage, Cyber Security, Special Projects.



Van Popering Insurance Agency

Affiliate/Supplier

8318 Pineville Matthews Road
Suite 266
Charlotte, North Carolina 28226

TEL: (704) 277-6964

EMAIL: billy@vpinsure.com

Primary Contact: Billy Austin
billy@vpinsure.com

DESCRIPTION/DISCIPLINE:

VP Insure is a full service agency with a focus on employee benefits and payroll services. We offer a unique payroll and employee onboarding platform that ties in United Healthcare's ACEC Life and Health Trust benefits. Our partnership with the ACEC Life and Health Trust powered by United Healthcare is one of our strengths.

Vaughn & Melton Consulting Engineers, Inc.

1318-F Patton Avenue
Asheville, NC 28806

TEL: (828) 253-2796

EMAIL: ldbrown@vaughnmelton.com

EMPS: 170

Primary Contact: DeWayne Brown
ldbrown@vaughnmelton.com

DESCRIPTION/DISCIPLINE:

Structural; Civil (Environmental); Civil (General Municipal); Civil (Structural); Civil (Transportation); Construction Management; Hydrogeology; Hydrology; Industrial; Materials Handling; Mining; Planning; Surveying; S.U.E.; Water Resources; Utility Services, Right-of-Way Acquisition; Other

Vericom Group LLC

Affiliate/Supplier

312 W Millbrook Road
Suite 233
Raleigh, NC 27609

TEL: (919) 845-8800

EMAIL: gblake@vericomgroup.com

Primary Contact: G. Blake Phillips
gblake@vericomgroup.com

DESCRIPTION/DISCIPLINE:

We help businesses gain visibility and control over their telecom, utility, cable TV, and IT services while improving services and decreasing costs. We turn dozens or hundreds of monthly bills into one

VHB Engineering, NC, P.C.

940 Main Campus Drive, Ste 500
Raleigh, NC 27606

TEL: (919) 829-0328

EMAIL: rscales@vhb.com

EMPS: 121

Primary Contact: Jenny Fleming
jffleming@vhb.com

DESCRIPTION/DISCIPLINE:

Civil (Environmental); Civil (General Municipal); Civil (Structural); Civil (Transportation); Energy, Hydrology; Planning; Water

Visible Value

Affiliate/Supplier

338 Belrose Dr
Cary, NC 27513

TEL: (919) 533-2444

EMAIL: cstorrusten@visiblevalue.net

EMPS: 2

Primary Contact: Chandra Storrusten
cstorrusten@visiblevalue.net

DESCRIPTION/DISCIPLINE:

We foster sustainable value creation strategies that allow professional services firms around the globe to

capitalize on pivotal opportunities during growth, transitions, and transformations.

VN Engineers, Inc.

1053 E Whitaker Mill Rd, Suite 115
Raleigh, North Carolina 27604

TEL: (919) 813-0618

EMAIL: mkurker@vnengineers.com

EMPS: 1

Primary Contact: Michael Kurker
mkurker@vnengineers.com

DESCRIPTION/DISCIPLINE:

VN Engineers, Inc. is a multi-disciplined civil engineering consulting firm which specializes in infrastructure, transportation, traffic, highway, planning, rail design and construction inspection.

Volkert, Inc.

5430 Wade Park Blvd.
Suite 410

Raleigh, NC 27607

TEL: (919) 854-0344

EMAIL: amy.hood@volkert.com

EMPS: 95

Primary Contact: Lacy Love
lacy.love@volkert.com

DESCRIPTION/DISCIPLINE:

Civil (Structural); Civil (Transportation); Construction Management, Planning, Construction Engineering and Inspection, NBIS Bridge Inspection, Traffic Engineering, Load Rating

VP Engineering

1317 Ashcroft Lane
Charlotte, NC 28209

TEL: (704) 372-7755

EMAIL: kjpappas@vpce.com

EMPS: 25

Primary Contact: Kosta Pappas
kjpappas@vpce.com

DESCRIPTION/DISCIPLINE:

Our approach is simple, but focused: Outstanding client service shapes our every decision. We leverage our 15 years in business and the expertise of our knowledgeable team to provide the best possible experience to our clients; applying the same attention to detail no matter the scale, complexity or delivery method. As committed problem solvers, we relentlessly pursue innovative and cost-effective solutions that meet the

unique needs of each project. Our team, piloted by a dedicated project manager, works collaboratively to apply our comprehensive MEP expertise to ensure the owner receives a functioning and efficient facility at turn-over. We proactively identify and address potential issues, providing an honest assessment that not only guides our actions moving forward, but promotes positive, interactive and long-lasting owner relationships that allows the project team to balance a project's aesthetic, energy, and budgetary goals.



Wantman Group, Inc

14045 Ballantyne Corporate Place
Ste 380
Charlotte, North Carolina 28277
TEL: (704) 716-8000
EMAIL: rebecca.chambers@wginc.com
EMPS: 10
Primary Contact: David Simpson
david.simpson@wginc.com

DESCRIPTION/DISCIPLINE:

WGI (Wantman Group, Inc.) is a national design and professional services firm leading in technology-based solutions for the construction of public infrastructure and real estate development.

Wetherill Engineering, Inc.

1223 Jones Franklin Road
Raleigh, NC 27606
TEL: (919) 851-8077
EMAIL: dbw@wetherilleng.com
EMPS: 50
Primary Contact: Debora Wetherill
dbw@wetherilleng.com

DESCRIPTION/DISCIPLINE:

Civil (General Municipal); Civil (Structural); Civil (Transportation); Construction Management; Hydrology; Planning; Surveying; Water; GIS, SUE, Architectural/Structural

Whitman, Requardt and Associates, LLP

1201 Edwards Mill Road, Suite 320
Raleigh, North Carolina 27607
TEL: (919) 859-0808
EMAIL: dsaunders@wrallp.com
EMPS: 10
Primary Contact: Melanie Hustead
mhustead@wrallp.com

DESCRIPTION/DISCIPLINE:

Established in 1915, WRA is a nationally recognized engineering, architectural, construction management and environmental firm.

Wildlands Engineering, Inc.

1430 S. Mint Street
Suite 104
Charlotte, NC 28203
TEL: (704) 332-7754
EMAIL: jkeaton@wildlandseng.com
EMPS: 78
Primary Contact: Shawn Wilkerson
swilkerson@wildlandseng.com

DESCRIPTION/DISCIPLINE:

Wildlands Engineering was founded in 2007 in Charlotte, NC as an ecologically focused engineering company specializing in water resources, stream and wetland restoration, and water quality management.

Wiley | Wilson

5540 Centerview Drive - Suite 405
Raleigh, NC 27606
TEL: (919) 746-8369
EMAIL: sbowman@wileywilson.com
EMPS: 10
Primary Contact: Steve Bowman
sbowman@wileywilson.com

DESCRIPTION/DISCIPLINE:

Full Services A/E firm with all design disciplines in house.

Willis Engineers

10700 Sikes Place, Ste. 115
Charlotte, NC 28277
TEL: (704) 377-9844
EMAIL: chuck@willisengineers.com
EMPS: 10
Primary Contact: Chuck Willis
chuck@willisengineers.com

DESCRIPTION/DISCIPLINE:

Master Planning for Wastewater; Master Planning for Water Systems; Pumping Stations; Sanitary Engineering; Sewage Collection, Treatment & Disposal; Wastewater Treatment; Water Supply, Treatment, Distribution

WithersRavenel, Inc.

115 MacKenan Drive
Cary, NC 27511
TEL: (919) 469-3340
EMAIL: twithers@withersravenel.com
EMPS: 309
Primary Contact: Brock Storrusten
bstorrusten@withersravenel.com

DESCRIPTION/DISCIPLINE:

Civil (Environmental); Civil (General Municipal); Civil (Transportation); Construction Management; Energy; Hazardous Waste; Hydrogeology; Hydrology; Industrial; Materials Handling; Planning; Surveying; Water; Other

W.K. Dickson & Co., Inc.

1213 W Morehead St
Suite 300
Charlotte, NC 28208
TEL: (704) 334-5348
EMAIL: kckern@wkdickson.com
EMPS: 98
Primary Contact: Kraig Kern
kckern@wkdickson.com

DESCRIPTION/DISCIPLINE:

Civil (Environmental); Civil (General Municipal); Civil (Transportation); Energy; Hydrogeology; Hydrology; Planning; Landscape Architecture; Surveying; Water; Other

Wood Environment Infrastructure, Inc.

4021 Stirrup Creek Drive, Ste. 100
Durham, NC 27703
TEL: (919) 381-9900
EMAIL: bill.hood@woodplc.com
EMPS: 252
Primary Contact: Bob Miller
robert.miller2@woodplc.com

DESCRIPTION/DISCIPLINE:

Civil (Environmental); Civil (General Municipal); Civil (Geotechnical); Civil (Structural); Civil (Transportation) Computer Applications; Construction

Management; Energy; Hazardous Waste;
Hydrology; Hydrogeology; Industrial;
Materials Handling; Mechanical;
Planning; Water; Other

BRANCHES:

1308 Patton Avenue
Asheville, NC
Matthew.Wallace@amecfw.com

2801 Yorkmont Road
Suite 100
Charlotte, NC
Andy.Clark@amecfw.com

5710 Oleander Drive
Suite 110
Wilmington, NC
Chris.Pruneau@amecfw.com

Woods Engineering, PA

254 North Front Street, Suite 201
Wilmington, NC 28401

TEL: (910) 343-8007

EMAIL: info@woodseng.com

EMPS: 9

Primary Contact: Melissa Begue
melissa@woodseng.com

DESCRIPTION/DISCIPLINE:

Project Feasibility Studies/Economic/
Public Outreach/Involvement, Value
Engineering, Efficiency Certification
Standards, e.g. LEED, Foundations,
Buildings, Towers, Stadiums, Seismic
Design, Bridges, Airports, Marine/
Ports, Safety and Security, Recreational
Facilities, Manufacturing, Heavy
Industry, Commercial, High-End
Residential, Industrial, Hospitality,
Schools, Apartments & Mixed Use

Woolpert North Carolina, PLLC

11301 Carmel Commons Blvd Ste 300
Charlotte, NC 28226

TEL: (704) 526-3058

EMAIL: lashawn.mungo@woolpert.com

EMPS: 8

Primary Contact: Lashawn Mungo
Lashawn.Mungo@woolpert.com

DESCRIPTION/DISCIPLINE:

Architectural/Structural; Civil
(Environmental); Civil (General
Municipal); Civil (Structural); Civil
(Transportation); Communications;

Computer Applications; Construction
Management; Electrical; Hydrogeology;
Hydrology; Industrial; Mechanical;
Planning; Surveying; Water;

The Wooten Company

120 N. Boylan Avenue
Raleigh, NC 27603

TEL: (919) 828-0531

EMAIL: mreese@thewootencompany.
com

EMPS: 88

Primary Contact: Gary Hartong
ghartong@thewootencompany.com

DESCRIPTION/DISCIPLINE:

Architectural/Structural; Civil
(Environmental); Civil (General
Municipal); Civil (Site Development);
Communications; Construction
Management; Electrical; Energy;
Hydrogeology; Hydrology; Industrial;
Mechanical; Planning; Surveying; Water;
Other

BRANCHES

GREENVILLE

301 West 14th St.
Greenville, NC 27834
Derrick Smith, PE
dsmith@thewootencompany.com

HICKORY

1430 B Old Lenoir Rd. NW
Hickory, NC 28601
Slade Harvin
sharvin@thewootencompany.com

WINSTON-SALEM

300 South Main St.
Winston-Salem, NC 27101
John Grey, PE
jgrey@thewootencompany.com

COLUMBIA, SC

1411 Gervais St. Ste 315
Columbia, SC 29201
John Stephens, PE
jfstephens@thewootencompany.com

WILMINGTON

272 North Front St. Ste 400
Wilmington, NC 28401
Walter Gross, PE
wgross@thewootencompany.com

WSE of North Carolina, PC

598 E. Chatham Street
Suite 137
Cary, North Carolina 27511

TEL: (919) 297-0220

EMAIL: trn@wseinc.com

EMPS: 30

Primary Contact: Candace Coghill
Coghill.Candace@wseinc.com

DESCRIPTION/DISCIPLINE:

Weston & Sampson offers
interdisciplinary design, engineering,
and environmental services along the
eastern seaboard with an office located
in Cary, North Carolina.

WSP

434 Fayetteville Street
Ste. 1500
Raleigh, NC 27601

TEL: (919) 836-4040

EMAIL: Nancy.Ray@wsp.com

EMPS: 253

Primary Contact: Daniel Bridges
Daniel.Bridges@wsp.com

DESCRIPTION/DISCIPLINE:

Acoustical; Architectural/Structural;
Civil (Environmental, General
Municipal, Geotechnical, Structural,
Transportation); Cogeneration;
Communications; Construction
Management; Electrical; Energy;
Hydrogeology; Hydrology; Mechanical;
Planning; Water

BRANCHES:

WSP USA

1001 Morehead Square Drive, Suite 610
Charlotte, NC 28203
Contact: Daniel Briggs

WSP USA

128 Talbert Road Suite A
Mooresville, NC 28117
Contact: Daniel Briggs

WSP USA

1425 Rock Quarry Rd.
Suite 115
Raleigh, NC 27610
Contact: Daniel Briggs

ACEC/NC Committees & Forums

Buildings & Infrastructure

Focusing on all aspects of vertical development projects and their respective sites, this committee serves as liaison between ACEC/NC and multiple owner types and related agencies (including but not limited to higher education institutions, NC Office of State Construction, municipalities, K-12 school districts, healthcare institutions and private industry) and monitors their activities in project planning, design, construction, budgeting and selection of design firms. Focus areas include building construction, site and infrastructure development, code compliance, sustainability and energy conservation.

This committee also focuses on economic development activity that affects projects and member firms, with the goal to develop a mutually beneficial relationship between ACEC/NC and economic development organizations such as the North Carolina Economic Developers Association (NCEDA) and raise the visibility and profile of member firms within the economic development community.

Board Liaison: Patrick Waterman

LaBella Associates
400 South Tryon St., Ste. 1300
Charlotte, NC 28285
(585) 770-2519
PWaterman@LaBellaPC.com

Chair: Alison Koss

KCI Associates, of NC, PA
4505 Falls of Neuse Road
Suite 400
Raleigh, NC 27609
(919) 783-9214
Alison.Koss@kci.com

Vice-Chair: Pete Nilsen

Aerial Analytics LLC
7151 O'Kelley Chapel Rd.
Cary, NC 27519
(919) 417-2343
pnilsen@aerial-analytics.com

Business Practices Committee

Small and Large Business Leaders interested in improving the efficiency and operation of member firms are members of this committee. The objective of this committee is to reach out to and expand opportunities for business members of ACEC/NC, protect the interests of engineering firms, and offer business leaders a chance to leverage the collective knowledge of a larger group, to improve overall performance related to human resources, financial, legal, business development, and operations.

Board Liaison: Liz Phipps

KCI Associates of NC, Inc.
4601 Six Forks Rd, Ste 220
Landmark Center 1
Raleigh, NC 27609
(919) 783-9214
liz.phipps@kci.com

Chair: Craig Hyman

Ramey Kemp Associates, Inc.
5808 Faringdon Place
Suite 100
Raleigh, NC 27609
(919) 872-5115
chyman@rameykemp.com

Vice-Chair: TBD

Environmental/Energy Committee (Joint with PENC)

This committee interacts with various departments and agencies of the State who are involved in environmental activities. Members interact with agency representatives to help improve relationships and assist in promoting environmental policies that benefit both member firms and State agencies. The committee also monitors and develops an information program on energy/power and private industrial issues. This mirrors a national goal of serving this industry segment and providing value to private and utility sector firms. It will also promote recruitment of these firms to membership in ACEC/NC.

Board Liaison: Matt Fogleman

ECS Southeast, LLP
1900 Hendersonville Rd. #10
Asheville, NC 28803
(828) 665-2307
mfogleman@ecslimited.com

ACEC/NC Co-Chair:

Chris Windley
CJS Conveyance, PLLC
320 S. Academy Street
Cary, NC 27511
(919) 890-3876
cwindley@cjsconveyance.com

PENC Co-Chair: Leah Young

KCI Associates, of NC, PA
4505 Falls of Neuse Road
Suite 400
Raleigh, NC 27609
(919) 783-9214
leah.young@kci.com

ACEC/NC Committees & Forums

Future Leaders Program

This program seeks to provide young professionals with the broad-based, in-depth industry knowledge they will need in order to rise into leadership positions within ACEC/NC member firms. Future Leaders are nominated annually for this program.

Board Liaison: Radha Krishna Swayampakala

RS&H
1520 South Blvd., Ste. 200
Charlotte, NC 28203
(704) 940-4788
radhakrishna.swayampakala@rsandh.com

Chair: Jessica McClure

Ramey Kemp Associates, Inc.
5808 Faringdon Place, Ste. 100
Raleigh, NC 27609
(919) 872-5115
Jmccclure@rameykemp.com

Vice-Chair:

Jake Wessell

Schnabel Engineering, Inc.
244 Princess St., Ste. 205
Wilmington, NC 28401
(910) 617-5350
jwessell@schnabel-eng.com

PAC Champion:

Robbie Hoffman

Summit Design & Engineering Services, PLLC
320 Executive Court
Hillsborough, NC 27278
(919) 732-3883
robby.hoffman@summitde.com

Legislative Committee

This committee monitors State and National legislation that may impact the engineering industry. The committee compiles the Council's legislative agenda for approval by the Board of Directors and assists in the lobbying efforts to support that agenda. The committee also promotes and organizes events that focus on furthering the Council's legislative agenda, and supporting our State and National Political Action Committees.

Board Liaison: Iona Thomas

McAdams Company
2905 Meridian Parkway
Durham, NC 27713
(919) 361-5000
thomas@mcadamsco.com

Chair: Brock Storrusten

WithersRavenel, Inc.
111 MacKenan Drive
Cary, NC 27511
(919) 469-3340
bstorrusten@withersravenel.com

Vice-Chair: John Weavil

S&ME, Inc.
9751 Southern Pine Blvd.
Charlotte, NC 28273
(704) 523-4726
jweavil@smeinc.com

Vice Chair: Neil Deans

Kimley-Horn and Associates, Inc.
421 Fayetteville St., Ste. 600
Raleigh, NC 27601
(919) 677-2000
neil.deans@kimley-horn.com

Executive Leaders Forum

This forum serves as a platform for our member firms' senior leadership to meet and exchange ideas on bettering our business practices with public and private sector clients. In addition, this forum will allow senior members to identify issues that the Board of ACEC/NC should consider focusing on and suggesting action items related to the political process that could be important to the long-term viability of the private engineering industry. Please note that this forum is mindful of anti-collusion requirements and will not discuss those items that could be construed as collusion.

Board Liaison: Stephen Greene

Ramey Kemp Associates, Inc.
5808 Faringdon Place, Ste. 100
Raleigh, NC 27609
(919) 872-5115
Sgreene@rameykemp.com

Co-Chair: Davis Diggs

Kisinger Campo & Associates
305 S. Main St.
Kannapolis, NC 28021
(704) 932-2122
DDiggs@kcaeng.com

Co-Chair: Joe Starr

Terracon
2401 Brentwood Rd.
Suite 107
Raleigh, NC 27604
(919) 202-7263
joe.starr@terracon.com

Transportation Committee

This committee serves as a liaison between ACEC/NC and the North Carolina Department of Transportation and other public agencies dealing with all areas of transportation including highways, railways, airports, waterways, mass transit, and other forms of public transportation.

Board Liaison: Mike Holder

Gannett Fleming, Inc.
2610 Wycliff Rd., Ste. 102
Raleigh, NC 27607
(919) 420-7660
mholder@gfnet.com

Chair: Greg Purvis

Wetherill Engineering, Inc.
559 Jones Franklin Rd., Suite 164
Raleigh, NC 27606
(919) 851-8077
gpurvis@wetherilleng.com

Vice-Chair: Allen Pope

Colliers Engineering & Design
2000 Regency Pkwy, Ste 295
Cary, NC 27518
(919) 439-6082
allen.pope@colliersengineering.com

Vice-Chair: Will Letchworth

McAdams Company
One Glenwood Ave., Suite 201
Raleigh, NC 27603
(919) 361-5000
Letchworth@mcadamsco.com



Qualifications-Based Selection of Design Professionals in North Carolina

Qualifications-Based Selection

What is Qualifications-Based Selection?

Qualifications-Based Selection (QBS) is a process for the selection of design professionals by public and private owners. It is a negotiated procurement process for selection based on qualifications and competence in relation to the work to be performed.

- It fosters broad-based competition.
- It affords the selection professional an opportunity to understand the owner's needs and objectives as a basis for negotiating the professional fee.
- It saves money over bid-based methods, as proven in actual practice by public and private owners.
- It takes full advantage of creativity and expertise of the design professional.

What Precedents Exist for Qualifications-Based Selection?

- It has been in use since the Civil War.
- Public Law 92-582 (Brooks Bill) confirms it is in the nation's best interest in federal procurement on civilian agency projects.
- Public Law 100-464 reaffirms 92-582 and adds specific services covered by the law.
- North Carolina General Statutes 143-64.31,.32,.33 clearly states it is public policy to use the QBS process.
- The American Bar Association's Model Procurement Code for State and Local Governments specifies it as the preferred method of procuring design professional services.

- The American Public Works Association endorses it in a strongly worded policy statement.
- Experience. Maryland adopted price-based selection in 1974, which in 1985 was overwhelmingly replaced with Qualifications-Based Selection type procurement method because of its efficiency and benefits to the state. Maryland's research and experience clearly showed that meaningful price-based comparisons are quite difficult to make at the time the selection is made. Price-based selection increased the design phase cost by 94% and resulted in major construction cost increases. The cost increase resulted from the time and effort it took Maryland to prepare a scope of work that could be used to obtain bids from design professionals.

Why Would an Owner Want to Use Qualifications Based Selection?

Because:

- High quality consultant services are only a small percentage of the project cost, yet affect and influence the entire project cost and outcome.
- It promotes improved project quality by assuring that the client clearly understands the scope of work required.
- It leads to realistic construction bids based upon a definitive scope of work.
- Studies have shown that use of Qualifications-Based Selection for projects is more efficient and less costly than use of a selection process that uses price as a primary criterion.
- Qualifications-Based Selection avoids the situation where the greatest benefit of the design professional's innovation and creativity is lost because its importance was not recognized at the fee proposal stage.

What about Price-Based Selection?

An RFP that requests fee proposals requires the design professional to determine the lowest fee at which the tasks for the project can be accomplished. A fee proposal can only be as precise and accurate as the owner's statement of the scope of work. For some projects it may be possible to state in advance a comprehensive scope of work on which proposals can be based, but many projects are complex, often more so than they first appear.

Ordinarily, an owner must define the scope of work desired. This is often a difficult and time-consuming task and is best accomplished jointly with the highest rated firm as determined by QBS evaluation; where the owner takes advantage of multi-discipline experience and knowledge to properly define the scope of services.

Do Owners Have to Use Qualifications-Based Selection?

NO. Owners have the right to choose any selection process they wish.

Likewise, the design professional has freedom of choice as to participation. For example:

Situation #1

- You have an existing relationship with a design professional.
- Your needs are met, and the firm you are working with has the qualifications needed for the new project.

The recommended method for you is to continue the current relationship by jointly developing the new project scope, contract form and fee.

Qualifications-Based Selection

Situation #2

- You do not have a relationship with a design professional.
- You have a project requiring the attention of a competent technical professional.

The recommended method for you is to use Qualifications-Based Selection.

Situation #3

- You may or may not have an existing relationship with a design professional.
- You have to (or want to) go through a competitive selection process.

The recommended method for you is to use Qualification Based Selection.

(A simplified example of the Qualifications-Based Selection Process follows this section.)

QBS and the Rules of Professional Conduct

Effective August 1, 2002 the N.C. Board of Examiners for Engineers and Surveyors added the following to its Rules of Professional Conduct:

21-56.0701(f)3. The licensee shall solicit or accept work only on the basis of qualifications and:...(3) shall, with regard to fee bidding on public projects, comply with the provisions of G.S. 143-64.31, and shall not knowingly cooperate in a violation of any provision of G.S.

143-64.31.

The following Questions were asked during an ACEC/NC Special

Conference, in January 2001, on the proper application of the Board's new requirement under the Rules of Professional Conduct pertaining to G.S. 143-64-31 (Mini-Brooks Act). The answers shown represent the official position of the North Carolina Board

of Examiners. Both the Questions and the answers apply equally to the Engineering and Surveying professions.

Question: Is a two envelope system, where qualifications are placed in one envelope and price is placed in the second envelope with an assurance from the public body that the price will not be opened until the selection has been made based upon qualifications, acceptable under the provisions of the Mini-Brooks Act?

Answer: No. A project price may not be provided until a firm has been selected based upon a qualification based process. Once selected, the firm can then negotiate a project price with the public body.

Question: Are all licensees obligated to report known violations of board rules?

Answer: Yes. All licensees are obligated to report known violations of board rules under the requirements of the Rules of Professional Conduct. This would include reporting Professional Engineers or firms that submit prices in response to request for proposals for publicly funded projects that have not been exempted under the provision the Mini-Brooks Act.

Question: What about the delivery of unit prices for the project?

Answer: The delivery of unit prices as a response to a request for proposals identifies relative information with respect to general fees and is not specific to tasks related to the project. The submission of any information, which can be easily correlated to a fixed price or a bid, is prohibited unless the project has been exempted.

Question: If the proposed fee is less than \$50, 000.00, is an exemption still required?

Answer: Yes. All exemptions must be in writing and are required on a project by project basis.

Question: What is an appropriate way to respond to a request for a price?

Answer: Currently, the American Council of Engineering Companies of North Carolina has developed a process to contact the party who is requesting the price. This contact includes detailed information regarding the Mini-Brooks Act and the obligation by the licensee not to submit a price.

Question: Will the Board of Examiners respond to a specific request for clarification of rule?

Answer: Yes. The Board of Examiners will respond to any request for clarification of responsibility concerning the proper application of the Mini-Brooks Act but the Board's jurisdiction is limited to licensees.

Question: If a resolution of exemption is obtained from the requesting entity, may the licensee submit a price?

Answer: Yes. The ability to exempt projects is provided to NCDOT and local units of government when the estimated cost is less than \$50,000.

Question: Are their exemptions for special conditions?

Answer: Yes. The Act provides for exceptions in the "cases of special emergency involving the health and safety of the people or their property."

Question: What does the effective date of the resolution need to be and must the resolution or exemption be project specific?

Answer: The resolution to exempt a project must be in force before a licensee may provide a project price. Each exemption must be project specific.

Question: How far does the responsibility of the engineer go as it relates to prime/sub-consultants (architectural type of contracting arrangement)?

Qualifications-Based Selection

Answer: The Board of Examiners has ruled that the provisions of the Mini-Brooks apply even in situations of prime/subconsultants. If the project involves public funds from a project that has not been exempted, the subconsultants must be selected through a qualification-based process. The North Carolina Attorney General has been asked to render an opinion on this issue.

Question: What about design/build and alternative delivery systems?

How should the licensee handle this issue?

Answer: Same as above.

Question: What is the licensee's responsibility as it relates to assure that the resolution of exemption is valid?

Answer: The licensee must exercise prudent judgment to determine that an exemption has been properly executed in writing for the specified project.

Question: What about multiple Phase contracts?

Answer: Unless specifically exempted, multiple phase contracts are subject to the requirements of the Mini-Brooks Act.

Question: There seems to some gray area in environmental work, such as wetlands delineation. Now with this new rule engineers cannot bid, but environmental professionals can. Is there some way that we can address this situation?

Answer: The Mini-Brooks Act only pertains to professional services listed as "...architectural, engineering or surveying services..." Professional Engineers and Firms may offer prices for projects that they are legally capable of providing,

i.e. geology, soil science, landscape architecture.

Question: Is it permissible to submit project prices for projects that have been exempted?

Answer: Yes. If the exemption is by a local unit of government or NCDOT and is in writing, it is permissible for licensees to submit total project prices.

Question: Is it a violation of the Rules of Professional Conduct for a licensee, placed in a responsible role for a public body, to request other professionals to provide a total project price on behalf of the owner?

Answer: Yes. All licensees of the Board are required to comply with the provisions of the Mini-Brooks Act.

Question: Has there been any consideration to Maryland's rescinding the price prohibition?

Answer: No. This is outside the Board's jurisdiction.

Question: Currently the State of North Carolina is required to request bids for construction and the contractor then typically hires sub-consultants through a bid process. Is it a violation for a licensee to provide a total project price under such circumstances?

Answer: Yes. The Mini-Brooks Act applies to all publicly funded projects and professional services must be selected based upon a qualification based process unless exempted under the provisions of the act. The North Carolina Attorney General has been requested to render an opinion on this issue.

Question: Paragraph F of Section 21-56.0701 is only applied/enforced relative to GS143-64.31.

Does this apply to public funds only?

Answer: The Mini-Brooks Act only pertains to public funds. The Board Rules do not prohibit licensee from offering total project prices for privately funded projects.

Question: What about primarily planning studies with engineering elements? Is this considered a violation?

Answer: This would be dictated by the nature of the services to be rendered for the specific project. If the services are professional in nature, the Mini-Brooks Act would apply.

Question: What about state agencies, are they covered by GS14364.31?

Answer: No exemptions are allowed for state agencies other than NCDOT.

Question: What about State Universities?

Answer: There was an exemption for capital improvement projects for The University of North Carolina, which expired on July 1, 2001

Question: Do other non-DOT agencies have the ability to exempt themselves on state directed projects?

Answer: There are no exceptions allowed for State agencies except for State Capital Improvement Projects where the total cost is less than \$100,000.00.

Question: What about exemptions for municipalities?

Answer: Local units of government or NCDOT may in writing exempt particular projects in the case of:

- (1) Proposed projects where an estimated professional fee is in an amount less than fifty thousand dollars (\$50,000), or
- (2) Other particular projects exempted in the sole discretion of the Department of Transportation stating the reasons therefore and the circumstances attendant thereto.

Qualifications-Based Selection

Question: Is a non-license violation a criminal violation?

Answer: No. A violation of the MiniBrooks Act would be considered a civil violation.

Question: Does the rule apply to GIS?

Answer: Yes

Question: What is considered a fee bid?

Answer: The submission of any information that would allow the public entity to determine a total project fee would be considered a “fee bid.”

Question: Would an RFP that request man-hours without unit prices be considered a bid?

Answer: The Act only allows for “unit price information” and qualifications. Man-hours would not be considered a “unit price.”

Question: During a short list or interview type of arrangement, if the interviewing party requests a price, is the licensee free to give a price at that time?

Answer: No. Price should not be given until the consultant is selected as the most qualified to provide the services requested and negotiations may then begin to establish the fee.

Question: What about licensed city/state engineers, architects and surveyors, are they in violation if they send out RFP's requesting a price.

Answer: Yes. All licensees must comply with the requirements of the Mini-Brooks Act.

Question: Who must issue the written exemption?

Answer: The exemption can only be issued by the entity that is authorized to award the contract.

Question: What if a sub-consultant asks for a price and it is thought that there is a sole source selection being performed?

Answer: The licensee should make every effort to verify that the proposed project is a sole source selection, which should include confirmation in writing from the requesting entity.

Question: What if a client (public) asks for prices of recent projects, is this a violation?

Answer: Currently, government form 330 requires prices for similar types of previous work effort as a basis for qualifications. It is not a violation of the Mini Brooks Act to provide this form as a part of the QBS process for publicly funded projects.

Qualifications-Based Selection

NORTH CAROLINA GENERAL STATUTES 143-

64.31, .32, .33 and .34 (as amended)

§ 143-64.31. Declaration of public policy.

It is the public policy of this State and all public subdivisions and Local Governmental Units thereof, except in cases of special emergency involving the health and safety

of the people or their property, to announce all requirements for architectural, engineering, and surveying services, to select firms qualified to provide such services on the basis of demonstrated competence and qualification for the type of professional services required without regard to fee other than unit price information at this stage, and thereafter to negotiate

a contract for architectural, engineering, or surveying services at a fair and reasonable fee with the best qualified firm. If a contract cannot be negotiated with the best qualified firm, negotiations with that firm shall be terminated and initiated with the next best qualified firm.

Changes to A/E Procurement by HB 1043:

SECTION 4. G.S. 143-64.31, as amended by Section 3 of this act, is amended to add a new subsection to read:

“(f) Except as provided in this subsection, no work product or design may be solicited,

submitted, or considered as part of the selection process under this Article; and no costs or fees, other than unit price information, may be solicited, submitted, or considered as part of the selection process under this Article. Examples of prior completed work may be solicited, submitted, and considered when determining demonstrated competence and qualification of

professional services; and discussion of concepts or approaches to the project, including impact on project schedules, is encouraged.”

§ 143-64.32. Written exemption of particular contracts.

Units of local government or the North Carolina Department of Transportation may in writing exempt particular projects from the provisions of this Article in the case of: Proposed projects where an estimated professional fee is in an amount less than fifty thousand dollars (\$50,000).

§ 143-64.33. Advice in selecting consultants or negotiating consultant contracts.

On architectural, engineering, or surveying contracts, the Department of Transportation or the Department of Administration may provide, upon request by a county, city, town or other subdivision of the State, advice in the process of selecting consultants or in negotiating consultant contracts with architects, engineers, or surveyors or any or all.

§ 143-64.34. (Effective December 31, 2006)

Exemption of certain projects.

(a) State Capital Improvement Projects under the jurisdiction of the State Building Commission where the estimated expenditure of public money is less than hundred thousand dollars (\$100,000) are exempt from the provisions of this Article.

§§ 143-64.35 through 143-64.49: Reserved for future codification purposes.

This statement of public policy and the results of its use provide the people of North Carolina with the assurance that public funds are providing them with the most qualified and experienced firms to handle each unique project that is undertaken in the public interest.

Qualifications-Based Selection

U.S. Public Law 92-582

The United States Congress passed Public Law 92- 582 in 1972 which states that “The Congress hereby declares it to be the policy of the Federal Government to publicly announce all requirements for architectural and engineering services and to negotiate contracts for architectural and engineering services on the basis of demonstrated competence and qualifications for the type of professional services required and at fair and reasonable prices”.

to interview all who may respond. This best- qualified group is invited to appear for interview. Interviewers include technically qualified person and others such as elected officials or citizens having a special interest. The direct presentations, Questions/answers/, and supporting materials of each firm are the basis for ranking the firms in order of relative qualifications. The top-rated firm is then invited for contract negotiations. Price is not ignored, but a realistic price is mutually agreed upon once details on the kinds and extent of work required of the consultant have been established through the negotiations. If agreement cannot be reached with the top firm, negotiations are terminated with that firm and opened with the firm judged next-best qualified.

The American Bar Association

The American Bar Association, on February 13, 1979, in a Model Procurement Code for State and Local Governments also recommended competitive negotiation procedures for selection, repeating the policy stated by Public Law 92-582 (see above).

APWA Policy Statement

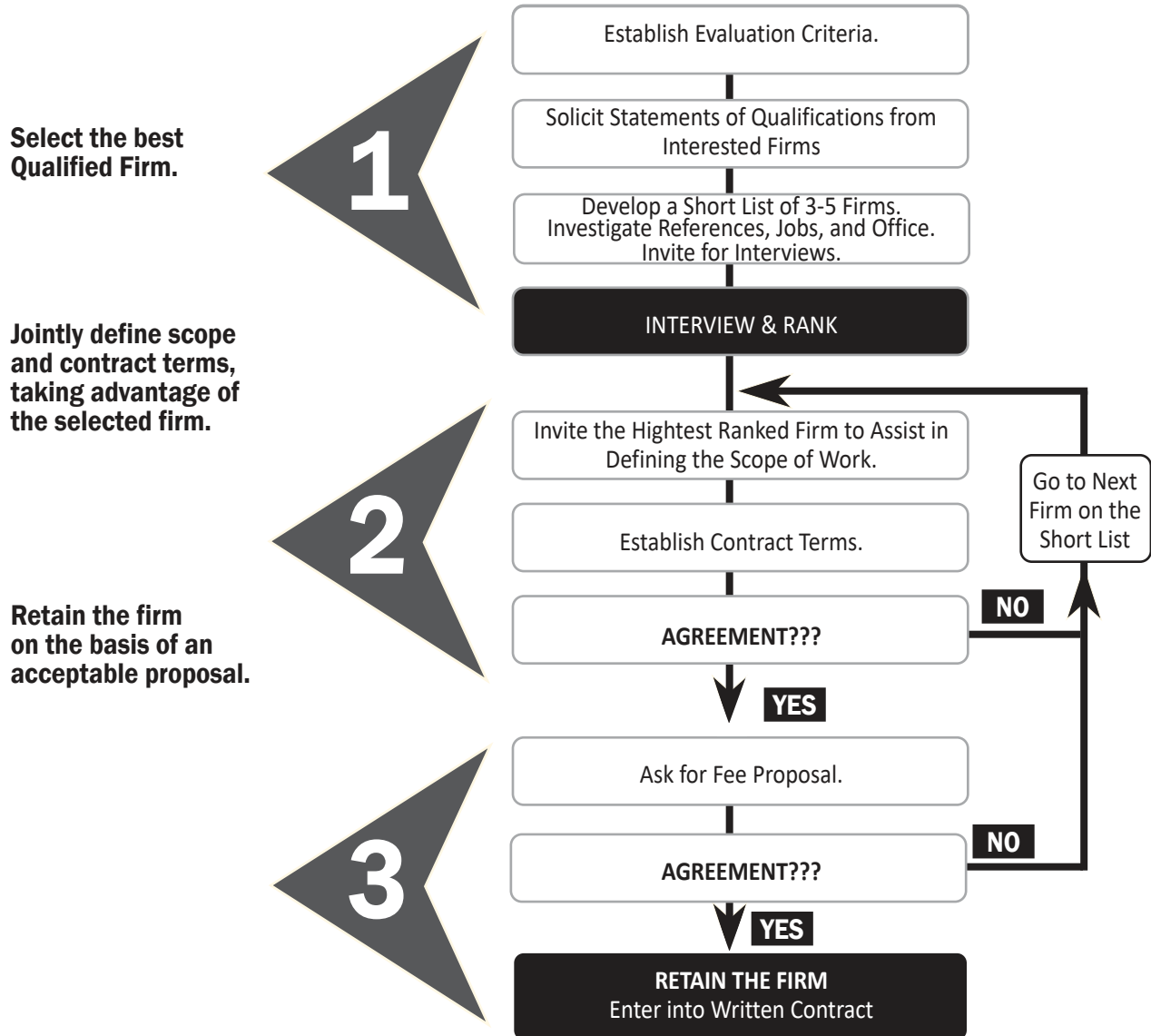
The American Public Works Association believes that the public interest is best served when governmental agencies select architects, engineers and related professional technical consultants for projects and studies through QBS procedures. Basing selections on qualifications and competence (rather than price) foster greater creativity and flexibility, and minimizes the potential for disputes and litigation (see footnote on QBS below).

APWA Footnote:

QBS means that the qualifications of architect- engineer consultants are the determining factors in consultant selection. Agencies alert the consultant community regarding available work and invite interested firms to respond. The responses are screened to determine the firms most likely qualified to meet the agency’s needs. The screening results in a “short-list”, because it is seldom practical or productive

QBS - The 3-Step Process

Qualifications Based Selection Process — Easy as One, Two, Three



ACEC/NC Website provides a [Link to the latest](#)
“*Qualifications-Based Selection of Design Professionals*”

ACEC National provides a [Link to the QBS Resource Center](#)

Who We Are & The Benefits of Membership

The American Council of Engineering Companies of North Carolina (ACEC/NC) is a member organization of the American Council of Engineering Companies (ACEC), a national federation of state organizations headquartered in Washington, DC.

ACEC/NC works to promote the business interests of engineering companies by providing legislative advocacy and business services for member companies.

Some of the benefits of ACEC/NC membership are:

MEMBERSHIP MEETINGS, which provide forums for sharing ideas and experiences between company leaders that often lead to partnering between companies on major projects in the state.

SEMINARS, through which required professional development hours (PDH's) can be earned. ACEC/NC seminars provide opportunities to earn at least a total of fifteen PDH's per year to meet the State licensure requirement for licensed engineers.

MARKETING OPPORTUNITIES through client contact at special awards ceremonies and joint conferences with State agencies, interaction with partner organizations representing client groups, and interaction with elected officials.

ACTIVE COMMITTEES, which focus on practice-area-specific issues that have an impact on how engineering companies do business both at the state and national level. All members of ACEC/NC normally participate in one or more committees and, through their participation, run the affairs of the Council.

A VOICE IN RALEIGH on issues impacting member firms. The Executive Director of ACEC/NC is a registered lobbyist for the Council and covers the activities of the General Assembly gavel-to-gavel, advocating on behalf of and protecting the interests of member companies.

A VOICE IN WASHINGTON through our national organization, ACEC, our Executive Director and Board of Directors monitor and advocate for legislation beneficial to the industry at the Federal level.

POLITICAL INVOLVEMENT through education on legislative issues affecting member companies, organized interaction and support of elected officials of North Carolina (ACEC NC/PAC and "Engineering Companies for NC" Independent Expenditure Account) and ACEC/PAC, which supports candidates at the National level.

COST-EFFECTIVE INSURANCE offered through the ACEC Life/Health Trust, which includes health, dental, disability, and life insurance as well as business insurance, retirement plans, and professional liability insurance through ACEC Business Insurance Trust and Retirement Trust, the Trusts can save your company money by leveraging the group purchasing power of more than 5,500 firms and 600,000 employees nationwide to give member companies lower insurance rates.

For additional information about ACEC/NC member benefits or questions on how to become a member, please contact our office at 919-781-7934 or via email info@acecnc.org.



ACEC/NC Index of Membership Firms

ACEC/NC Index of Member Firms

| | | |
|---|--|---|
| A. Morton Thomas and Associates, Inc.....9 | ECS Southeast, LLP16 | McKim & Creed, Inc.25 |
| Accelerate Engineering, PLLC9 | Eden & Associates, P.C.16 | Mead & Hunt, Inc.....25 |
| ACEC Business Insurance Trust.....9 | Edmondson Engineers, PA16 | Medallion Insurance Services25 |
| ACEC Life/Health Insurance Trust.....9 | Energy Land & Infrastructure17 | Medlock & Associates Engineering, PA....25 |
| ACEC Retirement Trust9 | Engineered Construction Co., Inc.....17 | MI Engineering, PLLC25 |
| ACRO Development Services.....9 | Engineered Designs, Inc.17 | Michael Baker International.....25 |
| Adams & Hodge Engineering, PC.....9 | ESP Associates, Inc.17 | Mid-Atlantic Associates, Inc.25 |
| AECOM9 | Exult Engineering, PC.....17 | Modjeski and Masters, Inc.25 |
| Aerial Analytics LLC.....10 | Falcon Engineering.....17 | Moffatt & Nichol25 |
| Alley, Williams, Carmen & King, Inc10 | FEI Civil Engineers and Surveyors.....17 | Morningstar Law Group26 |
| American Engineering Associates - | Finch & Associates17 | Mosher Engineering, Inc.26 |
| Southeast, PA.....10 | Fleming & Associates, PA17 | Mott MacDonald26 |
| Ames & Gough, Inc.....10 | Freese and Nichols, Inc.18 | MS Consultants, Inc.....26 |
| Andrew Consulting Engineers, PC.....10 | Froehling & Robertson, Inc.18 | Nexsen Pruet.....26 |
| Arcadis G&M of North Carolina, Inc.10 | Gannett Fleming, Inc.18 | Noble Structural Group, PLLC.....26 |
| Areté Engineers10 | Gavel & Dorn Engineering.....18 | North State Environmental26 |
| ATCS, PLLC.....10 | GEL Engineering of NC, Inc. | NOVA Engineering & |
| Atkins11 | DBA GEL Solutions18 | Environmental, Inc.26 |
| Atlantec Engineers11 | Geo Hydro Engineers18 | NV526 |
| Aztech, Inc.....11 | George Barbour + Associates.....19 | O. R. Colan Associates27 |
| B2E, Inc.11 | Geoscience & Technology, PA19 | Orsborn Engineering Group, PA27 |
| Baldwin Design Consultants11 | GPI Geospatial, Inc.19 | Pabst Design Group, PA27 |
| Bass, Nixon, and Kennedy, Inc11 | Green Engineering PLLC.....19 | Parrish and Partners27 |
| BDC.....11 | Green Mountain Engineering, PLLC19 | Parsons.....27 |
| Becker Morgan Group.....11 | Grinnell Leadership19 | Pennonl.....27 |
| Benesch11 | Hardesty & Hanover.....19 | Perigon International27 |
| Bolton & Menk, Inc.11 | Harrell Design Group, PC.....19 | PHC Engineering PLLC.....27 |
| Borum, Wade & Associates, P.A.....12 | Hart & Hickman20 | Piedmont Design Associates, PA27 |
| BREE & Associates, Inc.12 | Hazen and Sawyer, PC.....20 | Progressive Design |
| Brown Consultants12 | HDR of the Carolinas.....20 | Collaborative, Ltd.....27 |
| C2 Engineering Solutions, PLLC12 | HensonFoley.....20 | Pyramid Environmental |
| Cape Fear Engineering12 | High Country Engineering, PC20 | & Engineering PC28 |
| Carolina Ecosystems, Inc.....12 | Highfill Infrastructure Engineering, P.C....20 | Ragsdale Liggett PLLC28 |
| Carolinas Geotechnical Group, PLLC12 | Hinde Engineering, Inc.20 | Ramey Kemp Associates, Inc.28 |
| Catlin Engineers and Scientists12 | HNTB NC20 | Reece, Noland & McElrath, Inc28 |
| CDM Smith12 | HRV.....21 | REI Engineers, Inc.....28 |
| CH Engineering, PLLC12 | Hughes Engineering, PLLC.....21 | Rice LLC - Planning & Environmental |
| Charlotte Engineers, LLP12 | Hydrostructures, PA.....21 | Services.....28 |
| Cheatham & Associates, PA13 | ICE of Carolinas, PLLC.....21 | Richard Grubb & Associates (RGA), |
| Civil Consultants, Inc.....13 | Insurance Management | Incorporated (RGA, Incorporated)28 |
| Civil Design Concepts, PA13 | Consultants, Inc. (IMCI).....21 | Rinker Design Associates, PC29 |
| CJS Conveyance, PLLC.....13 | Jamestown Engineering Group, Inc.21 | Rivers & Associates, INC.....29 |
| Clark Nexsen13 | JC Waller & Associates.....21 | RS&H Architects-Engineers- |
| CLH Design, PA.....13 | JDH Structural Engineers, PLLC.....21 | Planners, Inc.....29 |
| Client Savvy.....13 | Johnson Mirmiran & Thompson, Inc.21 | Rummel, Klepper & Kahl, LLP29 |
| Coastal Engineering & Surveying, Inc.....13 | KCI Associates of NC, PA22 | S&ME, Inc.....29 |
| Colliers Engineering and Design.....14 | Kiewit Engineering Group, Inc.....22 | Saber Engineering PA.....29 |
| CONSOR14 | Kimley-Horn & Associates, Inc.22 | Safran Law Offices29 |
| Construction Materials | Kisinger Campo & Associates Corp.....22 | Salas O'Brien.....29 |
| Engineering & Consulting, PC14 | Kittelson & Associates, Inc.....22 | SAM LLC.....29 |
| Corporate Tax Advisors14 | Kleinfelder.....23 | Schnabel Engineering South, P.C.29 |
| CPL.....14 | LaBella Associates23 | SEPI, Inc.....30 |
| CriTek Engineering Group, PC.....14 | LHC Structural Engineers23 | Shielb PLLC30 |
| Davenport.....14 | Lindsay Transportation.....23 | Simpson Engineers & Associates, PC30 |
| Davis-Martin-Powell & | LJB Inc.....23 | SKA Consulting Engineers, Inc.30 |
| Associates, INC15 | LMHT Associates.....23 | Soil & Environmental Consultants, PA.....30 |
| DELTA v Forensic Engineering, INC.....15 | Lochner23 | Sole Source Engineering PC30 |
| Delta Airport Consultants Inc.15 | Locklear, Locklear & Jacobs, PLLC23 | Stambaugh Ness.....30 |
| Delta Oaks Group.....15 | Lynch Mykins.....24 | Stantec.....30 |
| Dewberry.....15 | Maple Engineering, PLLC24 | Stewart30 |
| Diehl & Phillips, P.A., Consulting | Mattern & Craig, Inc.....24 | Stoltzfus Engineering, Inc.30 |
| Engineers15 | MBD Consulting Engineers, PA24 | STV Engineers, Inc.31 |
| DJG.....15 | MBP Carolinas.....24 | Summer Consultants31 |
| Draper Aden Associates.....15 | McAdams Company24 | Summit Design and Engineering |
| DRMP, Inc.15 | McCormick Taylor, Inc.24 | Services, PLLC.....31 |
| Durisol Noise Barrier Systems.....16 | McDavid Associates, Inc.24 | Sungate Design Group, P.A.31 |
| E.L. Robinson Engineering Co.....16 | McGill Associates, PA.....24 | SWCA Environmental Consultants31 |

| | |
|--|----|
| SynTerra..... | 31 |
| T.Y. Lin International..... | 31 |
| T2 | 31 |
| TAE, Inc. | 31 |
| Taylor, Wiseman & Taylor | 32 |
| Teeter Engineering Group, PA..... | 32 |
| Telics | 32 |
| Terracon Consultants, Inc. | 32 |
| TGS Engineers | 32 |
| THC Inc. | 32 |
| Theorem Geo Associates | |
| Engineering, PLLC | 32 |
| Thigpen Engineering & Consulting, PLLC.. | 32 |
| Thinc Strategy, Inc. | 32 |
| Thompson Engineering Inc..... | 33 |
| Three Oaks Engineering | 33 |
| Traffic Planning and Design, Inc. | 33 |
| TRC Engineers | 33 |
| Trimat Materials Testing | 33 |
| Tyndall Engineering & Design, PA | 33 |
| UMA Geotechnical Construction..... | 33 |
| United Consulting Group, Ltd. | |
| dba United Consulting..... | 33 |
| Urban Design Partners PLLC..... | 33 |
| Utility Coordination Consultants, | |
| LLC..... | 33 |
| Utility Engineering, LLC..... | 34 |
| Van Popering Insurance Agency | 34 |
| Vaughn & Melton Consulting | |
| Engineers, Inc. | 34 |
| Vericom Group LLC | 34 |
| VHB Engineering NC, P.C. | 34 |
| Visible Value | 34 |
| VN Engineers, Inc..... | 34 |
| Volkert..... | 34 |
| VP Engineering..... | 34 |
| Wantman Group, Inc..... | 35 |
| Wetherill Engineering, Inc..... | 35 |
| Whitman, Requardt and | |
| Associates, LLP | 35 |
| Wildlands Engineering, Inc. | 35 |
| Wiley Wilson | 35 |
| Willis Engineers | 35 |
| Withersravenel, Inc. | 35 |
| W.K. Dickson & Co., INC..... | 35 |
| Wood PLC | 35 |
| Woods Engineering, PA | 36 |
| Woolpert NC, PLLC..... | 36 |
| Wooten Company, The..... | 36 |
| WSE of North Carolina, PC | 36 |
| WSP | 36 |

Appendix A.

PRACTICE AREAS FOR ENGINEERING EXCELLENCE AWARDS

A

Studies, Research, and Consulting Engineering Services

Non-design services including, but not limited to:

- New Products, Materials and Technologies
- Basic Research and Studies
- Technical Papers
- Water Conservation
- Project Feasibility Studies/Economic/Risk
- None of the projects entered in Category A are involved with the preparation of construction documents.
- Expert Testimony
- Computer/Software Technology
- Public Outreach/Involvement
- Security Plans
- Value Engineering

B

Building/Technology

- Systems Mechanical/Electrical/Plumbing
- Communications
- Software Systems
- Efficiency Certification Standards, e.g. LEED
- Secure Facilities (Military, Research, Correctional)
- Computer/Technology
- Acoustics
- Sustainability or Carbon Neutrality
- Energy Efficiency — New and Retrofit

C

Structural Systems

- Foundations
- Buildings
- Towers
- Stadiums
- Tunnels
- Seismic Design
- Bridges

D

Surveying and Mapping Technology

- Geometrics, ALTA, Land Title and Rights Surveys
- Control, GPS, Monitoring or Construction Surveying
- Surveying Mapping, GIS/LIS Photogrammetry

E

Environmental

- Hazardous Waste
- Solid Waste
- Noise
- Waste Pond Management
- Mitigation
- Restoration/Reclamation/Remediation
- Air Quality
- Recycling
- Carbon Sequestration and Trading

F

Water and Stormwater

- Graywater Systems
- Residuals Management and Reuse
- Mine Tailings
- Stormwater Management
- CSOs
- Wastewater Collection/Treatment and Disposal
- Agriculture
- Erosion Control

G

Water Resources

- Hydraulics, Hydrology
- Treatment
- Watershed Management
- Flood Risk Management
- Coastal and Eco-System Restoration
- Irrigation
- Surface and Groundwater Supply Development
- Transmission, Distribution & Storage
- Water Use Reduction
- Climate Adaptation
- Locks/Dams/Water Control Structures

H

Transportation

- Highways
- Rail
- Public Transit
- Airports
- Marine/Ports
- Intermodal Facilities

I

Special Projects

- Safety and Security
- Land Development
- Recreational Facilities
- Program and Construction Management
- Corrosion Protection/Cathodic Protection
- Trenchless Technologies
- Subsurface Engineering

J

Small Projects

Total project construction budget does not exceed \$2.5 Million. At the entrant's discretion, except for entries in Category A, projects under \$2.5 million are not limited to this category.

K

Energy

- Transmission and Distribution
- Power Generation
- Renewable Energy
- Cogeneration
- Energy Storage Technologies
- Energy Usage Reduction Programs
- Demand Side Management

L

Industrial and Manufacturing Processes and Facilities

- Petrochemical
- Biotech
- Manufacturing
- Heavy Industry
- Industrial Waste
- Materials Handling
- Mining, Metallurgy, Mineralogy



Notes