

ACEC/NC -Who Is Who

Executive Board



Elizabeth Phipps, PE
President
NV5



Iona Thomas, AICP
President-elect
McAdams



Michael Holder, PE
Vice-President
Gannett Fleming



Patrick Waterman, PE
Secretary/Treasurer
LaBella Associates



Michael Slusher, PE
National Director
Davis-Martin-Powell

Board of Directors



Eddie Wetherill, PE
Wetherill Engineering



Matt Fogleman, PE
ECS Southeast



Radha Krishna
Swayampakala, PE, PTOE
RS&H



Claire Brinkley, PE, AICP
WSP



Davis Diggs, PE
Kisinger Campo &
Associates



Alison Koss, PE
KCI Associates of NC

Junior Board



Katharine Mather, AICP
Mott MacDonald
Chair



Trey Henderick, PE
ECS
Vice Chair



Jon Ford, PE
JMT
Secretary



Seth Poole, PE
Stantec
Treasurer



Farrell Nicholson, PE
Wetherill Engineering
At-Large



Sarah Nifong, PE
HDR
At-Large



Will Larsen, PE
The Wooten Company
At-Large



Lauren Triebert, PE
VHB
At-Large



Jay Watson, PE
Finch & Associates
At-Large



Nicole Brown, PE
Benesch
At-Large



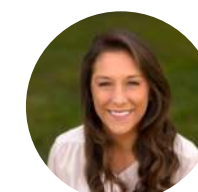
Nate Bouquin, PE
McAdams
At-Large



Michael Davis, PE
RS&H
At-Large



Josh Slusarczyk, MBA
W.K. Dickson Co., Inc.
At-Large



Sydnee Potter, PE
Willis Engineers
At-Large



Emily Robinson, PE
WSP
At-Large

ACEC/NC -Who Is Who

Staff



Tara Lightner Robbins
Executive Director



Meredith Houston,
PHR, IOM, CAE
Director of Operations



Jessica Hartong, CMP
Director of Events and
Conferences



Fred Bruchett, PE
Director of Member
Recruitment/Retention



Tammy Bromley
Office Manager

Committees

Buildings & Infrastructure

Chair

Joe Angell, PE, F.SAME
Wiley Wilson

Vice-Chair

Kyler Bender, PE, PTOE
Bolton & Menk

Business Practices

Chair

Craig Hyman, PE
ATCS

Vice-Chair

Chris Bushnell
The Wooten Company

Subcommittees Chairs

Business Development
Chris Bushnell
The Wooten Company

Human Resources

Kelly Sizemore, PHR
Kimley-Horn

Professional Development

Bob Graham
BDC

Future Leaders

Co-Chairs

Robby Hoffman, PE
Summit

Matt Werder, PE
HDR

Executive Leaders

Co-Chairs

Joe Starr, PE
Terracon

Kraig Kern, CPSM
W.K. Dickson Co., Inc.

Legislative

Chair

Brock Storrusten, PE
WithersRavenel

Vice-Chairs

Neil Deans, PE **Tori Meister, PE**
Kimley-Horn S&ME

Jenny Fleming, PE
VHB

Subcommittees Chairs

Federal

Joe Angell, PE, F.SAME, Wiley|Wilson

Funding - TBD

Transportation -

Josh Dalton, PE, CPESC, Sungate

Environmental -

Ryan Mitchell, DRMP

Economic Development -

Arthur Salido, Ph.D, MBA
WithersRavenel

Environmental/Energy

ACEC/NC Co-Chair

Miles Galloway, PE
The Wooten Company

PENC Co-Chair

Leah Young, PE
KCI

Subcommittees Chairs

Environment -

Andy Rodak, PE, TRC (Chair)

Vice Chair - TBD

Solid Hazard -

Justin Fabriziani, RSM, Terracon (Chair)

Vice Chair - TBD

One Water -

Shirshant Sharma, AtkinsReális
(Chair)

Bob Miller, McGill (Vice-Chair)

Energy -

Srijib Mukherjee, Oak Ridge
National Laboratory (Chair)
Brandon Finch, McAdams (Vice-Chair)

ACEC/NC -Who Is Who

Committees - cont'd
Transportation

Chair
Allen Pope
Colliers Engineering & Design

Vice-Chair
Will Letchworth
McAdams (DESIGN)

Vice-Chair
Christine Goins, PE, CCM
Goins Sweitzer Engineers & Consultants
(CEI)

Subcommittee Chairs

Project Delivery
Chair
Steve Smallwood
Stantec

Alternate Delivery
Chair
Brian Banks
Schnabel

Structures
Chair
Dominic Coletti, PE
HDR

Construction & Materials
Chair
Kevin O'Dell
Summit

ACEC/NC/DOT Joint
Conference

Chair
Amy Faulkner
HDR

PACs

ACEC/NC PAC

Mike Holder, PE
Gannett Fleming
Chair

Brock Storrusten, PE
WithersRavenel
Vice Chair

Neal Deans, PE
Kimley-Horn & Associates
Treasurer

Matt Fogleman, PE
ECS
Assistant Treasurer

Jeremy Potter, PE
DRMP
Secretary

Tara Lightner Robbins
Ex-Officio

National PAC Champion: Iona Thomas, AICP, McAdams

State PAC Champion: Mike Holder, PE, Gannett Fleming