

ACEC/NC – Who is Who



Board of Directors



Iona Thomas, AICP
President
McAdams



Mike Holder, PE
President-Elect
Gannett Fleming



Patrick Watrman, PE
Vice President
LaBella Associates



Radha Krishna Swayampakala, PE, PTOE
Secretary/Treasurer
RS&H



Liz Phipps, PE
National Director
NV5



Alison Koss, PE
Director
KCI Associates of NC



Davis Diggs, PE
Director
Kisinger Campo & Associates



Claire Brinkley, PE, AICP
Director
STV



Matt Fogleman, PE
Director
ECS Southeast



Jenny Fleming, PE
Director
VHB



Joe Starr, PE
Director
Terracon Consultants

Staff



Tara Robbins
Executive Director



Jessica Hartong, CMP
Director of Events & Conferences



Sarah Dolezilek
Member Relations Director



Tammy Bromley
Operations Manager

Junior Board



Josh Slusarczyk, PE
Chair
W.K. Dickson Co., Inc.



Emily Robinson, PE
Vice Chair
WSP



Nate Bouquin, PE
Secretary
McAdams



Nicole Brown, PE
Treasurer
Benesch



Michael Davis, PE
At-Large
RS&H



Sydnee Potter, PE
At-Large
Willis Engineers



Blake Bush, PE
At-Large
HDR



Miles Galloway, PE
At-Large
The Wooten Company



J.R. Hopson, PE
At-Large
VHB



Jennifer Smith-Morton, PE
At-Large
Mead & Hunt



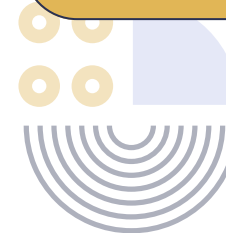
Mitch Magee, PE
At-Large
Kimley-Horn



Russell Rockett, PE
At-Large
RK&K



Matthew Vaughan, PE
At-Large
Bolton & Menk



Committees – Building and Infrastructure



Joe Angell, PE,
F.SAME
Chair
Wiley|Wilson



Kyler Bender, PE,
PTOE
Vice-Chair
Bolton & Menk



Matt Fogleman, PE
Board Liaison
ECS Southeast



Mitch Magee, PE
Jr. Board Liaison
Kimley-Horn

Committees – Business Practices



Craig Hyman, PE
Chair
ATCS



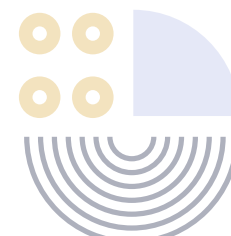
Chris Bushnell
Vice-Chair
The Wooten Company



Joe Starr, PE
Board Liaison
Terracon



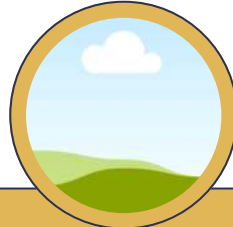
Matthew Vaughan, PE
Jr. Board Liaison
Bolton-Menk



Committees – Environmental & Energy



Lauren Triebert, PE
ACEC/NC Co-Chair
VHB



PENC Co-Chair



Jenny Fleming, PE
Board Liaison
VHB



Jennifer Smith-Morton, PE
Jr. Board Liaison
Mead & Hunt

Committees – Legislative



Seth Poole, PE
Chair
Stantec



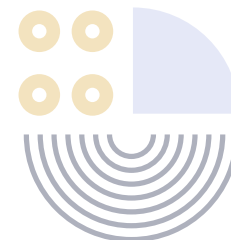
Mike Surasky, PE, PTOE
Vice-Chair
LJB Engineering



Claire Brinkley, PE, AICP
Board Liaison
STV Engineering



Miles Galloway, PE
Jr. Board Liaison
The Wooten Company



Committees – Transportation



Will Letchworth, PE

Chair
McAdams



**Christine Goins, PE,
CCM**

Vice-Chair
Goins Sweitzer



Tim Goins, PE

Vice-Chair
VHB



**Radha Krishna
Swayampakala, PE, PTOE**

Board Liaison
RS&H



Blake Bush, PE

Jr. Board Liaison
HDR



Russell Rockett, PE

Jr. Board Liaison
RK&K

Committees – Future Leaders



Robby Hoffman, PE

Co-Chair
Summit Design & Engineering Services



Matt Werder, PE

Co-Chair
HDR



Alison Koss, PE

Board Liaison
KCI Associates of NC



J.R. Hopson, PE

Jr. Board Liaison
VHB



Josh Dalton, PE, CPESC
Chair
At-Large - year 2 of 3
Sungate Design



Paul Meehan, PE
Vice-Chair
At-Large - year 2 of 3
HDR



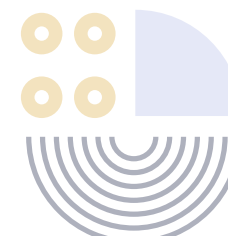
Mike Slusher, PE
Treasurer
At-Large - year 1 of 3
Davis Martin Powell



Mike Holder, PE
ACEC/NC President Elect
1-year term
Gannett Fleming



Kraig Kern, CPSM
filling Liz Phipps
ACEC/NC National Director
term



PACs– ACEC/NC PAC



Seth Poole, PE
Trustee
Stantec



Patrick Waterman, PE
Trustee
LaBella Associates



Will Letchworth, PE
Trustee
McAdams



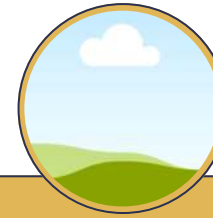
Josh Slusarczyk, PE
Trustee
W.K. Dickson & Co., Inc.



Jeremy Potter, PE
Trustee
DRMP



Will Larsen, PE
Trustee
The Wooten Company



XXX
Trustee
XXX

PACs– National PAC Champion



Iona Thomas, AICP
McAdams



Patrick Waterman, PE
LaBella Associates

PACs– State PAC Champion

Subcommittees – Transportation

Alternate Delivery
Chair
Jason Gorie
WSP

Construction & Materials
Chair
Philip Johnson
KCI

Project Delivery
Chair
Steve Smallwood
Stantec

Structures
Co-Chairs
Liz Laws Greg Cols
WSP AECOM

**ACEC/NC/DOT
Joint Conference**
Chair
Amy Faulkner
HDR

Multi-Modal
Chair
Emily Poole
HDR